

INTERACTIVE EDITION

Internal Hexagon Catalog 2024/2025

DIGITAL DENTISTRY

MOR - Spiral Implant

MOR Implant is a highly compatible implant solution based on the popular **Internal Hexagon connection** with **SLA - Sand blast, double etched in acid surface treatment**. With its tapered body and exceptional self-drilling capabilities, it establishes a strong and stable connection suitable for immediate loading. MOR Implant adapts to various bone types and augmentation procedures, making it an ideal choice for a wide range of patients.

- CONNECTION:**
- Internal Hexagon 2.42mm.
 - Slim Platform - Internal Hexagon 2.0mm.

MATERIAL: Ti-6Al-4V ELI (Titanium Grade 5).

SURFACE TREATMENT: SLA - Sandblast, Large Grit, Acid-etch.

STERILIZATION: Gamma irradiation.

SPECIFICATIONS:



CONNECTION AND PLATFORM SWITCHING

- Internal Hexagon - One universal platform for all diameters.
- Minimizes crestal bone loss, promotes bone and soft tissue growth, improves natural aesthetics.



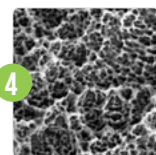
TAPERED BODY WITH SPIRAL DESIGN

- Optimal soft tissue support.
- Excellent primary stability.
- Improves bone condensation during insertion.



AGGRESSIVE APICAL THREADS

- Allow for more aggressive bone engagement for indications such as immediate extraction sockets, poor bone quality, and immediate loading.



SLA - SANDBLAST, LARGE GRIT, ACID-ETCH

- Enhances dental implant stability and osseointegration, improving long-term success rates.



SELF TAPPING SYSTEM

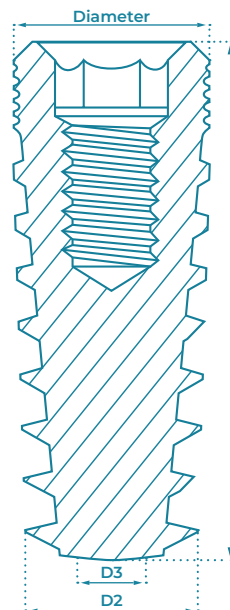
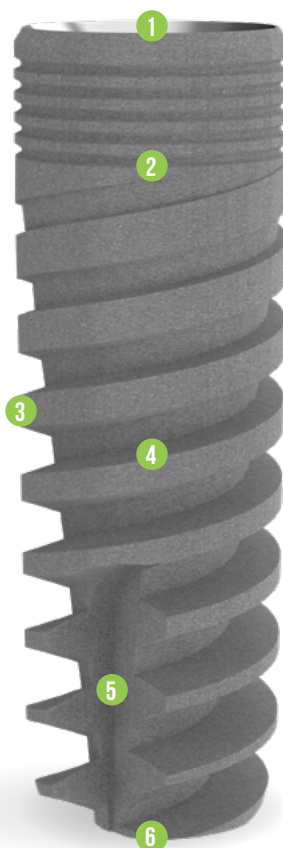
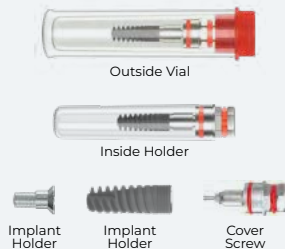
- Self-tapping.
- Self-drilling.
- Increases load distribution.



ROUND APEX

- Enhances implant stability.
- Protects sinus from perforation, and minimizes the risk of anatomical structure damage.

PACKAGE CONTENT



DIAMETER	L (mm)	CODE	D2	D3
Ø3.0	10	S3010	Ø2.75	Ø2.3
	11.5	S3011		
	13	S3013		
	16	S3016		
Ø3.5	8	M3508	Ø3.1	Ø2.4
	10	M3510		
	11.5	M3511		
	13	M3513		
Ø3.75	16	M3516	Ø3.75	Ø3.1
	8	M3708		
	10	M3710		
	11.5	M3711		
Ø4.2	13	M3713	Ø3.95	Ø3.2
	16	M3716		
	6	M4206		
	8	M4208		
Ø5.0	10	M4210	Ø4.6	Ø4.1
	11.5	M4211		
	13	M4213		
	16	M4216		
Ø6.0	6	M5006	Ø5.6	Ø5.1
	8	M5008		
	10	M5010		
	11.5	M5011		
Ø6.0	13	M5013	Ø5.6	Ø5.1
	16	M5016		
	6	M6006		
	8	M6008		
Ø6.0	10	M6010	Ø5.6	Ø5.1
	11.5	M6011		
	13	M6013		
	16	M6016		

Drilling Protocol

Drilling Drill	Ø2.0	Ø2.5	Ø2.8	Ø3.2	Ø2.5x3.75	Ø2.7x4.0	Ø3.65	Countersink Ø3.75x4.2	Ø4.2	Ø4.5	Ø5.2	Countersink Ø5.0x6.0
Ø3.0	Soft Bone	○	○	○	○	○	○	○	○	○	○	○
Ø3.0	Hard Bone	○	○	○	○	○	○	○	○	○	○	○
Ø3.5	Soft Bone	○	○	○	○	○	○	○	○	○	○	○
Ø3.5	Hard Bone	○	○	○	○	○	○	○	○	○	○	○
Ø3.75	Soft Bone	○	○	○	○	○	○	○	○	○	○	○
Ø3.75	Hard Bone	○	○	○	○	○	○	○	○	○	○	○
Ø4.2	Soft Bone	○	○	○	○	○	○	○	○	○	○	○
Ø4.2	Hard Bone	○	○	○	○	○	○	○	○	○	○	○
Ø5.0	Soft Bone	○	○	○	○	○	○	○	○	○	○	○
Ø5.0	Hard Bone	○	○	○	○	○	○	○	○	○	○	○
Ø6.0	Soft Bone	○	○	○	○	○	○	○	○	○	○	○
Ø6.0	Hard Bone	○	○	○	○	○	○	○	○	○	○	○

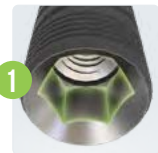
The suggested drilling protocol is only a recommendation and should not replace the doctor's opinion.

RBM - Spiral Implant

RBM Implant is a highly compatible implant solution based on the popular **Internal Hexagon connection** with **RBM - Resorbable Blast Media surface treatment**. With its tapered body and exceptional self-drilling capabilities, it establishes a strong and stable connection suitable for immediate loading. RBM Implant adapts to various bone types and augmentation procedures, making it an ideal choice for a wide range of patients.

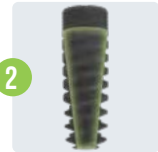
- CONNECTION:**
- Internal Hexagon 2.42mm.
 - Slim Platform - Internal Hexagon 2.0mm.
- MATERIAL:** Ti-6Al-4V ELI (Titanium Grade 5).
- SURFACE TREATMENT:** RBM - Resorbable Blast Media.
- STERILIZATION:** Gamma irradiation.

SPECIFICATIONS:



CONNECTION AND PLATFORM SWITCHING

- Internal Hexagon - One universal platform for all diameters.
- Minimizes crestal bone loss, promotes bone and soft tissue growth, improves natural aesthetics.



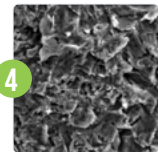
TAPERED BODY WITH SPIRAL DESIGN

- Optimal soft tissue support.
- Excellent primary stability.
- Improves bone condensation during insertion.



AGGRESSIVE APICAL THREADS

- Allow for more aggressive bone engagement for indications such as immediate extraction sockets, poor bone quality, and immediate loading.



RBM - RESORBABLE BLAST MEDIA

- Promotes faster and stronger bone integration, enhancing the stability of dental implants.



SELF TAPPING SYSTEM

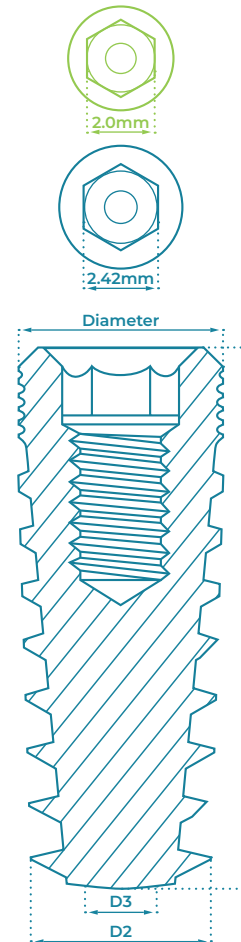
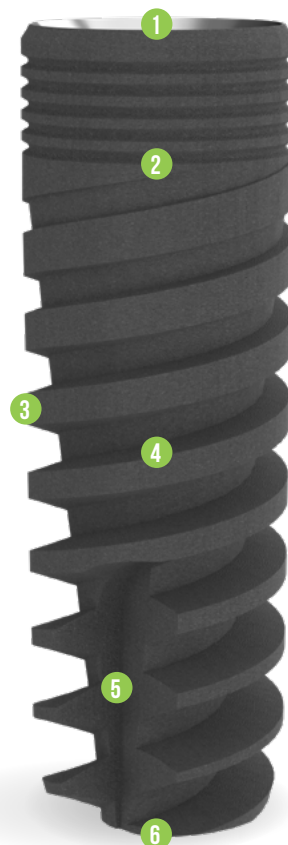
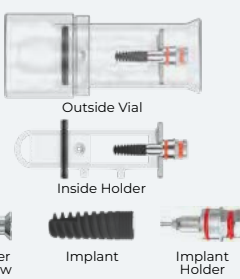
- Self-tapping.
- Self-drilling.
- Increases load distribution.



ROUND APEX

- Enhances implant stability.
- Protects sinus from perforation, and minimizes the risk of anatomical structure damage.

PACKAGE CONTENT



DIAMETER	L (mm)	CODE	D2	D3
Ø3.0	10	R3010	Ø2.75	Ø2.3
	11.5	R3011		
	13	R3013		
Ø3.5	8	R3508	Ø3.1	Ø2.4
	10	R3510		
	11.5	R3511		
	13	R3513		
Ø3.75	16	R3516	Ø3.75	Ø3.1
	6	R3706		
	8	R3708		
	10	R3710		
	11.5	R3711		
Ø4.2	13	R3713	Ø3.95	Ø3.2
	16	R3716		
	6	R4206		
	8	R4208		
	10	R4210		
Ø5.0	11.5	R4211	Ø4.6	Ø4.1
	13	R4213		
	16	R4216		
	6	R5006		
	8	R5008		
	10	R5010		
	11.5	R5011		
	13	R5013		
	16	R5016		

Drilling Protocol		Marking Drill	Ø2.0	Ø2.5	Ø2.8	Ø3.2	Ø3.5x3.75	Ø2.7x4.0	Ø3.65	Countersink Ø3.75x4.2	Ø4.2	Ø4.5
Ø3.0	Soft Bone	●	○	○	○	○	○	○	○	○	○	○
	Hard Bone	●	○	○	○	○	○	○	○	○	○	○
Ø3.5	Soft Bone	●	○	○	○	○	○	○	○	○	○	○
	Hard Bone	●	○	○	○	○	○	○	○	○	○	○
Ø3.75	Soft Bone	●	○	○	○	○	○	○	○	○	○	○
	Hard Bone	●	○	○	○	○	○	○	○	○	○	○
Ø4.2	Soft Bone	●	○	○	○	○	○	○	○	○	○	○
	Hard Bone	●	○	○	○	○	○	○	○	○	○	○
Ø5.0	Soft Bone	●	○	○	○	○	○	○	○	○	○	○
	Hard Bone	●	○	○	○	○	○	○	○	○	○	○

The suggested drilling protocol is only a recommendation and should not replace the doctor's opinion.

ABA - Spiral Implant

ABA Implant is a highly compatible implant solution based on the popular **Internal Hexagon connection** with **SLA - Sand blast, double etched in acid surface treatment**. With its tapered body and exceptional self-drilling capabilities, it establishes a strong and stable connection suitable for immediate loading. ABA Implant can be used in all types of surgical procedures - two stages, immediate loading, and flapless for all types of ridges. It works especially well on narrow ridges without needing prior bone grafting.

CONNECTION: Internal Hexagon 2.42mm.

MATERIAL: Ti-6Al-4V ELI (Titanium Grade 5).

SURFACE TREATMENT: SLA - Sandblast, Large Grit, Acid-etch.

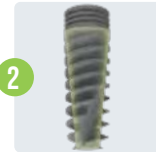
STERILIZATION: Gamma irradiation.

SPECIFICATIONS:



CONNECTION AND PLATFORM SWITCHING

- Internal Hexagon 2.42mm - One universal platform for all diameters.
- Minimizes crestal bone loss, promotes bone and soft tissue growth, improves natural aesthetics.



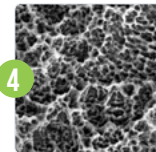
TAPERED BODY WITH SPIRAL DESIGN

- Optimal soft tissue support.
- Excellent primary stability.
- Improves bone condensation during insertion.



AGGRESSIVE APICAL THREADS

- Allow for more aggressive bone engagement for indications such as immediate extraction sockets, poor bone quality, and immediate loading.



SLA - SANDBLAST, LARGE GRIT, ACID-ETCH

- Enhances dental implant stability and osseointegration, improving long-term success rates.



SELF TAPPING SYSTEM

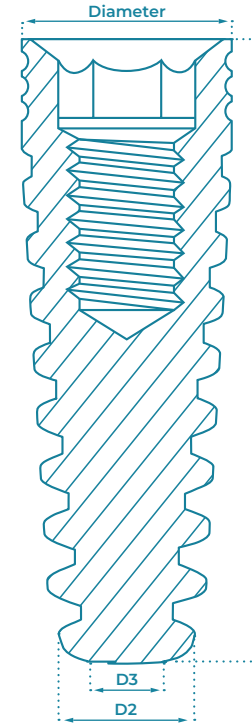
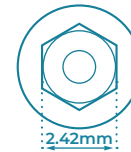
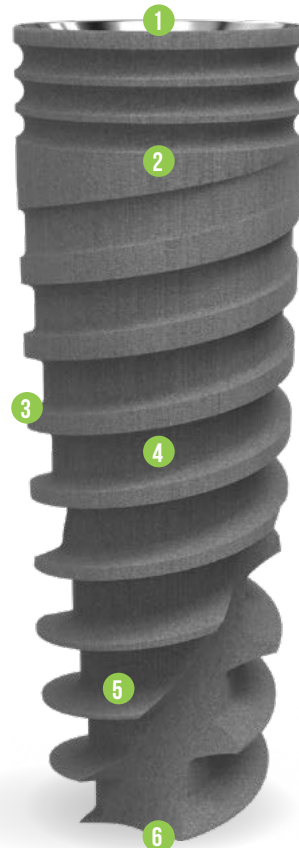
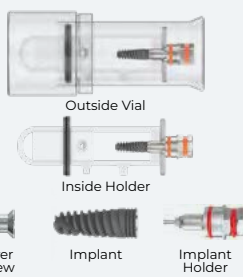
- Self-tapping.
- Self-drilling.
- Increases load distribution.



APEX

- Enhances implant stability.
- Sharp and deep threads

PACKAGE CONTENT



DIAMETER	L (mm)	CODE	D2	D3
Ø3.5	8	A3508	Ø3.1	Ø2.4
	10	A3510		
	11.5	A3511		
	13	A3513		
Ø3.75	16	A3516	Ø3.75	Ø3.1
	8	A3708		
	10	A3710		
	11.5	A3711		
Ø4.2	13	A3713	Ø3.95	Ø3.2
	16	A3716		
	6	A4206		
	8	A4208		
Ø5.0	10	A4210	Ø4.6	Ø4.1
	11.5	A4211		
	13	A4213		
	16	A4216		
Ø6.0	6	A5006	Ø5.6	Ø5.1
	8	A5008		
	10	A5010		
	11.5	A5011		
	13	A5013		
	16	A5016		
	6	A6006		
	8	A6008		
	10	A6010		
	11.5	A6011		
	13	A6013		

Drilling Protocol

Drilling Drill	Ø2.0	Ø2.5	Ø2.8	Ø3.2	Ø2.5x3.75	Ø2.7x4.0	Ø3.65	Countersink Ø3.75x4.2	Ø4.2	Ø4.5	Ø5.2	Countersink Ø5.0x6.0
Ø3.5	Soft Bone	○	○	○	○	○	○	○	○	○	○	○
Ø3.5	Hard Bone	○	○	○	○	○	○	○	○	○	○	○
Ø3.75	Soft Bone	○	○	○	○	○	○	○	○	○	○	○
Ø3.75	Hard Bone	○	○	○	○	○	○	○	○	○	○	○
Ø4.2	Soft Bone	○	○	○	○	○	○	○	○	○	○	○
Ø4.2	Hard Bone	○	○	○	○	○	○	○	○	○	○	○
Ø5.0	Soft Bone	○	○	○	○	○	○	○	○	○	○	○
Ø5.0	Hard Bone	○	○	○	○	○	○	○	○	○	○	○
Ø6.0	Soft Bone	○	○	○	○	○	○	○	○	○	○	○
Ø6.0	Hard Bone	○	○	○	○	○	○	○	○	○	○	○

The suggested drilling protocol is only a recommendation and should not replace the doctor's opinion.

EVA - Mountless Implant

EVA Implant is a highly compatible implant solution based on the popular **Internal Hexagon connection** with **RBM - Resorbable Blast Media surface treatment**. It is ideal for both one-stage and two-stage implantation protocols and performs exceptionally well across various types of bone tissue, including immediate loading in post-extraction sockets. The implant's cylindrical-conical body and progressive threading ensure exceptional fixation and a bone-condensing effect, even in cases where bone quality is challenging. It features a reverse-tapered neck and platform switching to optimize the preservation of bone and soft tissue volumes, providing excellent aesthetics and stability.

CONNECTION: Internal Hexagon 2.42mm.

MATERIAL: Ti-6Al-4V ELI (Titanium Grade 5).

SURFACE TREATMENT: RBM - Resorbable Blast Media.

STERILIZATION: Gamma irradiation.

SPECIFICATIONS:



CONNECTION AND PLATFORM SWITCHING

- Internal Hexagon 2.42mm - One universal platform for all diameters.
- Minimizes crestal bone loss, promotes bone and soft tissue growth, improves natural aesthetics.



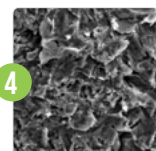
CYLINDRICAL - CONICAL SHAPE

- Offers unparallel fixation and a bone-condensing effect, even in challenging bone quality scenarios.
- Enhances implant stability.



DOUBLE PROGRESSIVE THREADS

- Enhances load distribution within the cortical bone, promoting strength and durability.
- Deeper threads towards the bottom facilitate bone condensing in the cancellous layer, increasing implant stability and longevity.



RBM - RESORBABLE BLAST MEDIA

- Promotes faster and stronger bone integration, enhancing the stability of dental implants.



SELF TAPPING SYSTEM

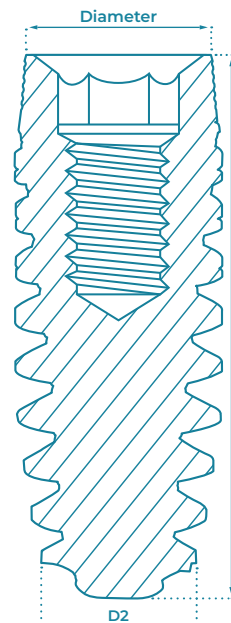
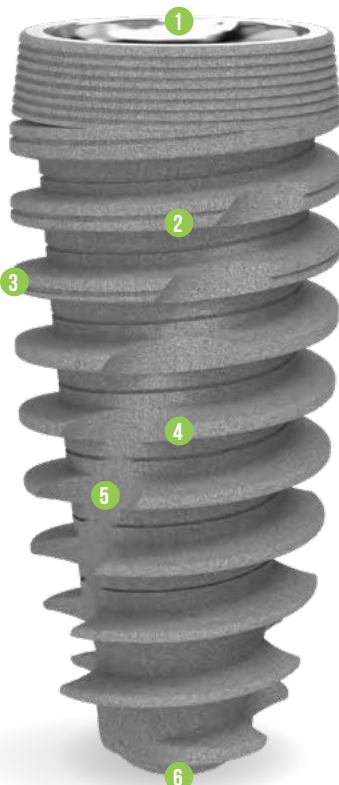
- Increased thread depth and cutting edges.
- Self-drilling.
- Increases load distribution.



AGGRESSIVE APICAL APEX

- Enhancing bone condensing.
- Features expanding threads at the bottom, offering a secure fit and sealing effects.
- ensures optimal implant stability and minimizes the risk of micromotion, promoting reliable osseointegration and long-term success.

PACKAGE CONTENT



Scan QR code for EVA drilling protocols

- The suggested drilling protocol is only a recommendation and should not replace the doctor's opinion



DIAMETER	L (mm)	CODE	D2
Ø3.0	8	E3008	Ø2.0
	10	E3010	
	11.5	E3011	
Ø3.3	13	E3013	Ø2.0
	8	E3308	
	10	E3310	
Ø3.5	11.5	E3311	Ø2.0
	13	E3313	
	16	E3316	
Ø3.8	8	E3508	Ø2.5
	10	E3510	
	11.5	E3511	
Ø4.2	13	E3513	Ø2.5
	16	E3516	
	8	E3808	Ø2.8
	10	E3810	
	11.5	E3811	
Ø4.5	13	E3813	Ø2.8
	16	E3816	
	8	E4208	Ø3.2
	10	E4210	
	11.5	E4211	
Ø5.0	13	E4213	Ø3.2
	16	E4216	
	8	E4508	Ø3.5
	10	E4510	
	11.5	E4511	
Ø5.0	13	E4513	Ø3.5
	16	E4516	
	8	E5008	Ø4.0
	10	E5010	
	11.5	E5011	
	13	E5013	
	16	E5016	

MOUNTLESS COMPONENTS

HEX DRIVERS

	HEX (mm)	L (mm)	CODE
	2.42	10	HD2410-ML
		15	HD2415-ML

MOTOR MOUNTS

	HEX (mm)	L (mm)	CODE
	2.42	22	MM2422-ML
		28	MM2428-ML

CFI - Cylindrical Implant

CFI Implant is a highly compatible implant solution based on the popular **Internal Hexagon connection** with **SLA - Sand blast, double etched in acid surface treatment**. Perfect for dense bone cases, but appropriate for all types of bone augmentation procedures. It's strong fit and proven tapered design ensures stability during procedures. Micro rings optimize shear strength, while the combined cylindrical and conical shape with V-shaped threads enhance it's stability. The flat-cutting apex allows final adjustments during placement.

CONNECTION: Internal Hexagon 2.42mm.

MATERIAL: Ti-6Al-4V ELI (Titanium Grade 5).

SURFACE TREATMENT: SLA - Sandblast, Large Grit, Acid-etch.

STERILIZATION: Gamma irradiation.

SPECIFICATIONS:



CONNECTION AND PLATFORM SWITCHING

- Internal Hexagon 2.42mm - One universal platform for all diameters.
- Minimizes crestal bone loss, promotes bone and soft tissue growth, improves natural aesthetics.



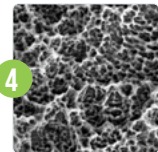
V-SHAPED THREADS AND MICRO RINGS

- Improved Stability.
- Deliver optimal surface area, better load distribution, and reduced crestal stress.



TAPERED BODY WITH CYLINDRICAL AND CONICAL SHAPE

- Excellent primary stability.
- Cylindrical shape promotes long-term osseointegration by enlarging surface area and bone to implant contact.



SLA - SANDBLAST, LARGE GRIT, ACID-ETCH

- Enhances dental implant stability and osseointegration, improving long-term success rates.



SELF TAPPING SYSTEM

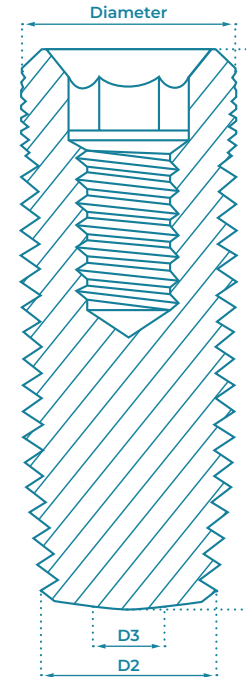
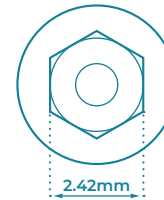
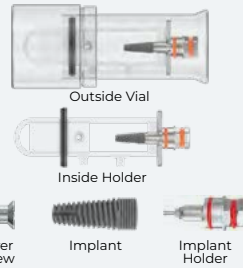
- Self-tapping.
- Self-drilling.
- Increases load distribution.



FLAT APEX

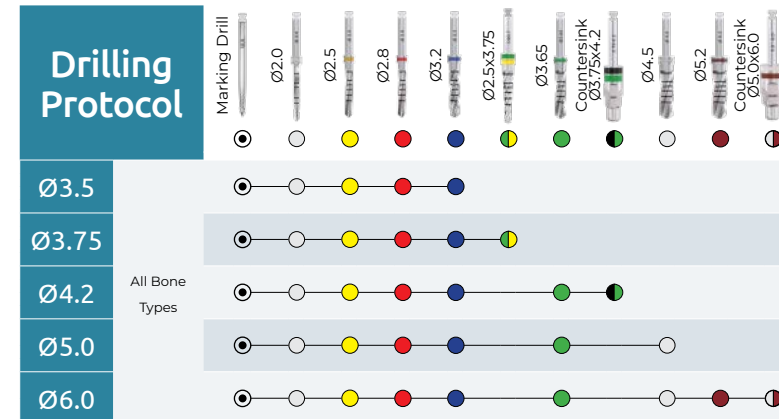
- Enhances implant stability.
- Allows final adjustments during placement.

PACKAGE CONTENT



DIAMETER	L (mm)	CODE	D2	D3
Ø3.5	8	C3508	Ø2.8	Ø2.1
	10	C3510		
	11.5	C3511		
	13	C3513		
Ø3.75	16	C3516	Ø3.2	Ø2.5
	8	C3708		
	10	C3710		
	11.5	C3711		
Ø4.2	13	C3713	Ø3.6	Ø2.9
	16	C3716		
	6	C4206		
	8	C4208		
Ø5.0	10	C4210	Ø4.2	Ø3.5
	11.5	C4211		
	13	C4213		
	16	C4216		
Ø6.0	6	C5006	Ø5.2	Ø4.5
	8	C5008		
	10	C5010		
	11.5	C5011		
	13	C5013		
	16	C5016		
	6	C6006		
	8	C6008		
	10	C6010		
	11.5	C6011		
	13	C6013		

Drilling Protocol



The suggested drilling protocol is only a recommendation and should not replace the doctor's opinion.

MAX - Basal/Cortical Spiral Implant

MAX Implant is a highly compatible implant solution based on the popular **Internal Hexagon connection** with **RBM - Resorbable Blast Media surface treatment**. It is specifically recommended for soft bone, but highly suitable for all bone types. MAX features sharp, deep threads and aggressive threads, which can be placed immediately without the waiting period of osteointegration or additional augmentation with bone replacement materials. The implant is placed with the threads orthogonally to the occlusion load, ensuring remarkable stability in the cortical bone and improving chewing load distribution.

CONNECTION: Internal Hexagon 2.42mm.

MATERIAL: Ti-6Al-4V ELI (Titanium Grade 5).

SURFACE TREATMENT: RBM - Resorbable Blast Media.

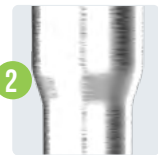
STERILIZATION: Gamma irradiation.

SPECIFICATIONS:



CONNECTION AND PLATFORM SWITCHING

- Internal Hexagon 2.42mm - One universal platform for all diameters.
- Minimizes crestal bone loss, promotes bone and soft tissue growth, improves natural aesthetics.



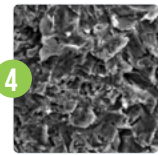
BASAL/CORTICAL BONE POSITIONING

- Smooth-surface neck.
- Ideal for patients with bone structure problems.
- Better chance of success and durability.
- Even chewing load distribution.



SHARP, DEEP, AND AGGRESSIVE THREADS

- Can be placed immediately without the waiting period of osteointegration or additional augmentation with bone replacement materials.



RBM - RESORBABLE BLAST MEDIA

- Promotes faster and stronger bone integration, enhancing the stability of dental implants.



TAPERED THREAD AND TAPERED CORE BODY

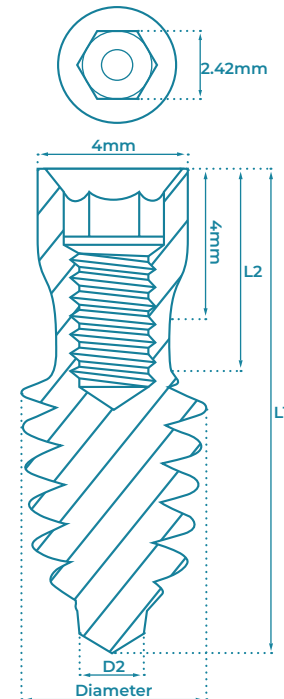
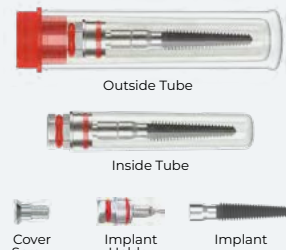
- Excellent primary stability.
- Improves bone condensation during insertion.



SELF TAPPING SYSTEM

- Self-tapping.
- Minimal drilling.

PACKAGE CONTENT



DIAMETER	L1 (mm)	L2 (mm)	CODE	D2
Ø4.2	10	4.5	G4210	Ø1.8
	11.5	4.7	G4211	
	13	5	G4213	
	16	6	G4216	
	18	7	G4218	
	20	7.5	G4220	
Ø5.0	22.5	7.5	G4222	Ø2.5
	25	7.5	G4225	
	8	4.1	G5008	
	10	4.5	G5010	
	11.5	4.7	G5011	
	13	5	G5013	
Ø6.0	16	6	G5016	Ø1.8
	18	7	G5018	
	20	7.5	G5020	
	8	4.1	G6008	
	10	4.5	G6010	
	11.5	4.7	G6011	
	13	5	G6013	Ø2
	16	6	G6016	

Drilling Protocol

PRM

		Marking Drill	Ø2.0	Ø2.8	Ø3.2	Ø3.65
		1200-1500	900-1200	500-700	500-700	400-700
Ø4.2	Soft Bone	●	○	○	○	○
Ø4.2	Hard Bone	●	○	●	●	○
Ø5.0	Soft Bone	●	○	○	○	○
Ø5.0	Hard Bone	●	○	●	●	○
Ø6.0	Soft Bone	●	○	○	○	○
Ø6.0	Hard Bone	●	○	●	●	●

For Over 20.0mm Implant Length

PRM

		Straight Ø2.0	Osteotome Ø2.0	Conical Ø2.0-Ø3.0	Osteotome Ø3.0	Twist Ø3.2
		900-1200		500-700		500-700
Ø4.2	Soft Bone	○	○	○	○	○
Ø4.2	Hard Bone	○	○	○	○	○

The suggested drilling protocol is only a recommendation and should not replace the doctor's opinion.

ZYG - Zygomatic Implant

ZYG Implant is a highly compatible implant solution based on the popular **Internal Hexagon connection** with **RBM - Resorbable Blast Media surface treatment**. Specifically created to address issues concerning a depleted upper jawbone, making it highly suitable for graft-less treatment with immediate loading. The smooth and polished implant neck facilitates effortless insertion, and the sharp and robust threads at the apex firmly anchors the implant to the zygomatic bone. This implant is intentionally designed for an extramaxillary approach.

CONNECTION: Internal Hexagon 2.42mm.

MATERIAL: Ti-6Al-4V ELI (Titanium Grade 5).

SURFACE TREATMENT: RBM - Resorbable Blast Media.

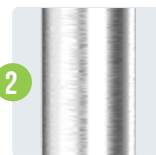
STERILIZATION: Gamma irradiation.

SPECIFICATIONS:



CONNECTION

- Internal Hexagon 2.42mm.
- Minimizes crestal bone loss, promotes bone and soft tissue growth, improves natural aesthetics.



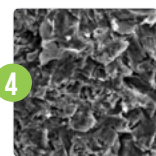
SMOOTH SURFACE NECK

- Easy insertion to the zygomatic bone.



AGGRESSIVE APICAL THREADS

- Allow for more aggressive bone engagement for indications such as immediate extraction sockets, poor bone quality, and immediate loading.



RBM - RESORBABLE BLAST MEDIA

- Promotes faster and stronger bone integration, enhancing the stability of dental implants.



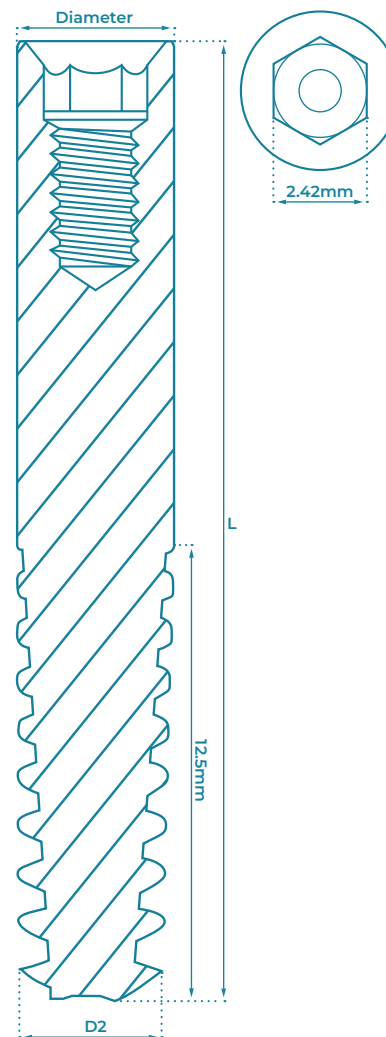
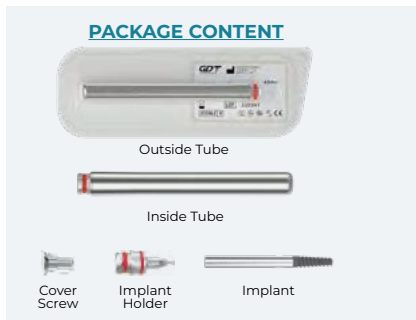
TAPERED BODY WITH SPIRAL DESIGN

- Optimal soft tissue support .
- Excellent primary stability.
- Improves bone condensation during insertion.



SELF TAPPING SYSTEM

- Self-tapping.
- Minimal drilling.
- Increases load distribution.



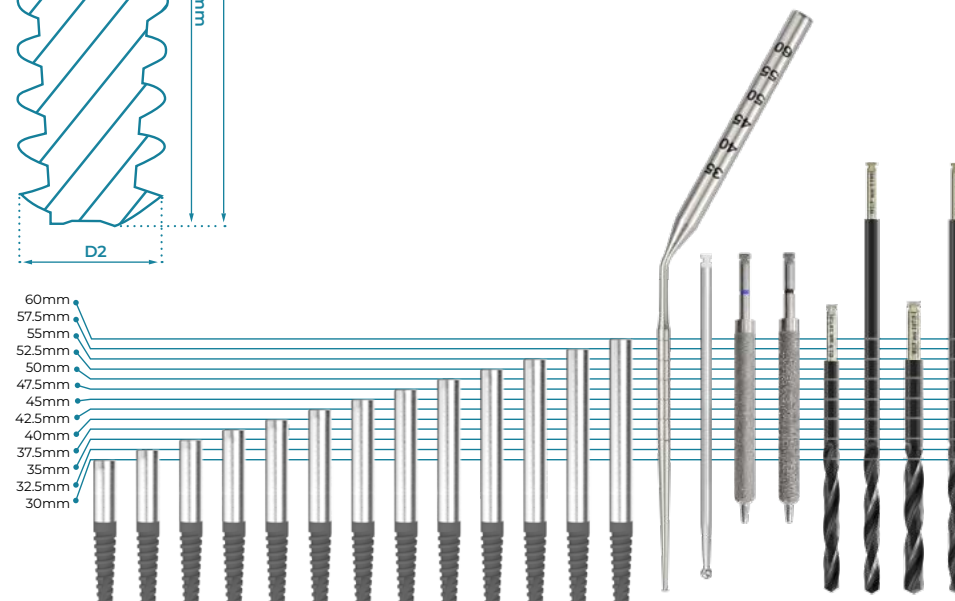
DIAMETER	L (mm)	CODE	D2
Ø4.2	30	Z4230	3.5
	32.5	Z4232	
	35	Z4235	
	37.5	Z4237	
	40	Z4240	
	42.5	Z4242	
	45	Z4245	
	47.5	Z4247	
	50	Z4250	
	52.5	Z4252	
	55	Z4255	
	57.5	Z4257	
	60	Z4260	

DRILLING PROCEDURE

- Irrigation is strongly advised throughout the drilling procedure. When drilling with irrigation, use an intermittent motion to allow debris to be flushed away.
- Continue until the required depth is reached.
- Do not exceed 1500 RPM.

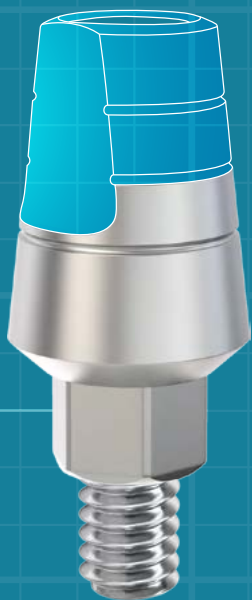
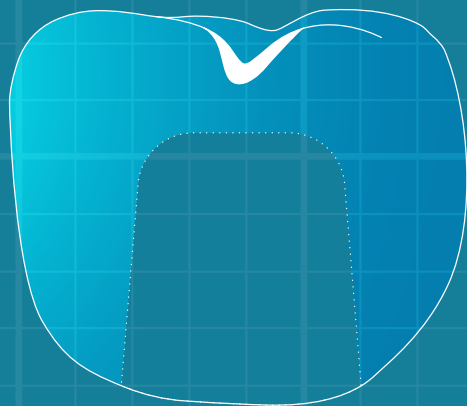
CAUTION

- During drilling procedures, avoid lateral pressure on the drills - Lateral pressure to the drill can cause drill fracture.
- Before beginning drilling activities, ensure that the drill is properly fastened into the hand-piece.



• The suggested drilling protocol is only a recommendation and should not replace the doctor's opinion.

INTERNAL HEXAGON PROSTHETICS



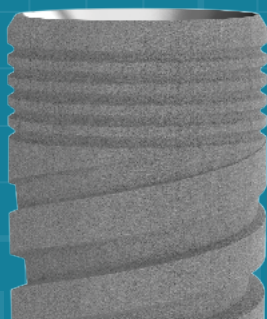
MADE IN ISRAEL

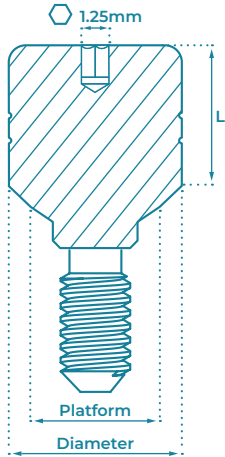


Scan the QR Code
to visit GDT Implants website

INTERNAL HEXAGON PROSTHETICS

CEMENT-RETAINED RESTORATION





HEALING CAPS

Designed to facilitate the healing process of both soft and hard tissues surrounding the implant. The Healing Caps not only protect the implant from the accumulation of plaque and debris, but also aid in shaping the gumline for optimal aesthetics.

MATERIAL:

Ti-6Al-4V ELI (Titanium Grade 5).

TORQUE TIGHTENING:

15 Ncm (Recommendation).

SLIM					Platform - Ø3mm
					Diameter - Ø3.5mm
L	2mm	3mm	4mm	5mm	6mm



CODE	HCS2-SL	HCS3-SL	HCS4-SL	HCS5-SL	HCS6-SL
------	---------	---------	---------	---------	---------

NARROW					Platform - Ø3.8mm
					Diameter - Ø3.8mm
L	3mm	4mm	5mm	6mm	7mm



CODE	HCN3	HCN4	HCN5	HCN6	HCN7
------	------	------	------	------	------

STANDARD					Platform - Ø3.8mm	
					Diameter - Ø4.5mm	
L	2mm	3mm	4mm	5mm	6mm	7mm



CODE	HCS2	HCS3	HCS4	HCS5	HCS6	HCS7
------	------	------	------	------	------	------

WIDE					Platform - Ø3.8mm	
					Diameter - Ø5.5mm	
L	2mm	3mm	4mm	5mm	6mm	7mm



CODE	HCW2	HCW3	HCW4	HCW5	HCW6	HCW7
------	------	------	------	------	------	------

EXTRA WIDE				Platform - Ø3.8mm
				Diameter - Ø6.3mm
L	2mm	3mm	4mm	5mm



CODE	HCEW2	HCEW3	HCEW4	HCEW5
------	-------	-------	-------	-------

CONCAVE STANDARD					Platform - Ø3.8mm	
					Diameter - Ø4.5mm	
L	2mm	3mm	4mm	5mm	6mm	7mm



CODE	HCV2	HCV3	HCV4	HCV5	HCV6	HCV7
------	------	------	------	------	------	------

CONCAVE WIDE				Platform - Ø3.8mm	
				Diameter - Ø5.5mm	
L	2mm	3mm	4mm	5mm	6mm



CODE	HCVW2	HCVW3	HCVW4	HCVW5	HCVW6
------	-------	-------	-------	-------	-------

CONCAVE EXTRA WIDE				Platform - Ø3.8mm	
				Diameter - Ø6.3mm	
L	2mm	3mm	4mm	5mm	6mm

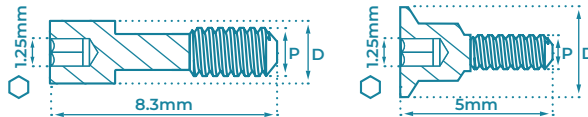


CODE	HCVEW2	HCVEW3	HCVEW4	HCVEW5	HCVEW6
------	--------	--------	--------	--------	--------

SCREWS

MATERIAL:

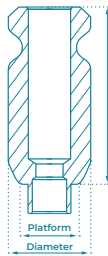
Ti-6Al-4V ELI (Titanium Grade 5).



ABUTMENT SCREWS		COVER SCREWS	
TYPE	Slim	Standard	Standard
P	Ø1.55mm	Ø1.75mm	Ø1.75mm
D	Ø1.8mm	Ø2.0mm	Ø3.8mm



CODE	SA-SL	SA	CS-SL	CS
------	-------	----	-------	----



IMPRESSION COPING TRANSFERS

Provide accuracy during impression-taking to ensure the best possible results with every use. Can be safely sterilized in an autoclave for added security. Ideal for single tooth restorations, bridges, partial dentures, and full dentures alike.

MATERIAL:

Stainless Steel.

PACKAGED WITH:

Screw for Closed Tray 16mm / Open Tray 22mm.

SLIM			NARROW		STANDARD	
TYPE	Closed Tray	Open Tray	Closed Tray	Open Tray	Closed Tray	Open Tray
L	11.5mm		11.5mm		9mm	13mm
P	Ø3mm		Ø3.8mm		Ø3.8mm	
D	Ø3.5mm		Ø3.8mm		Ø4.5mm	



CODE	STRC-SL	STRO-SL	NTRC	NTRO	STRC	STRO
------	---------	---------	------	------	------	------



CLIP TRANSFERS

		Platform - Ø3.75mm
		Diameter - Ø4.5mm
TYPE	Closed Tray	
L	9mm	14.5mm



CODE	CTR9	CTR13
------	------	-------

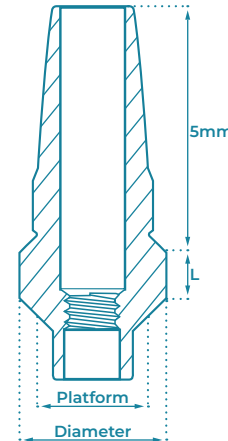
Snap-cap Transfer Abutment enables quick and simple impression taking. The Cap remains in the impression tray after it is removed from the mouth.

ABUTMENT MATERIAL: Ti-6Al-4V ELI (Titanium Grade 5).

SNAP-CAP MATERIAL: Acetal Polymer.

PACKAGED WITH: Abutment Screw **SA**, and Snap-cap **PSOC**.

TORQUE TIGHTENING: 25 Ncm (Recommendation).



SNAP-ON TRANSFERS		Platform - Ø3.8mm		
		Diameter - Ø4.8mm		
L	1mm	2mm	3mm	4mm



CODE	SOC1	SOC2	SOC3	SOC4
------	------	------	------	------

CONCAVE SNAP-ON TRANSFERS		Platform - Ø3.8mm		
		Diameter - Ø4.5mm		
L	1mm	2mm	3mm	4mm

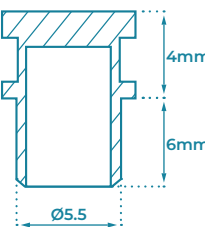


CODE	SOV1	SOV2	SOV3	SOV4
------	------	------	------	------

SNAP-ON CAP



CODE	PSOC
------	------



OVERDENTURE

TYPE	GdtLoc / Ball	Click
L	5.6	11.3
D	Ø4.6	Ø4.8



CODE	TFB	TFL
------	-----	-----

MULTI UNIT 1.6mm

TYPE	Closed Tray	Open Tray
L	7mm	15mm
D	Ø4.8mm	Ø5mm



CODE	MU-TCT	MU-TOT
------	--------	--------

MULTI UNIT 1.4mm

TYPE	Closed Tray	Open Tray
L	14mm	16mm
D	Ø4.9mm	Ø5mm

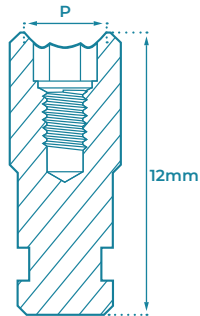





CODE	NM-TCT	NM-TOT
------	--------	--------

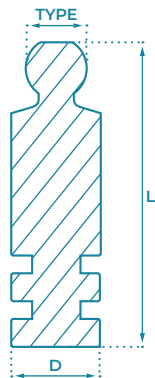
ANALOGS

The Analog provides a replica that shows the exact position of a patient's implant. It is made by taking an impression of the patient's teeth and implants, and using that impression to create a copy that shows the exact anatomy of the implant of the implant as it exists in the patient's mouth.

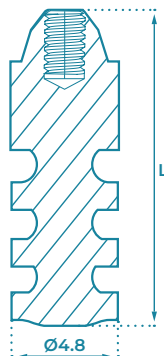
MATERIAL: Stainless Steel.





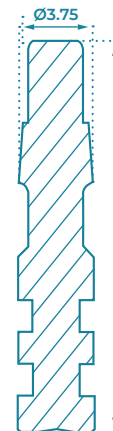
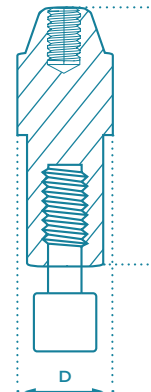
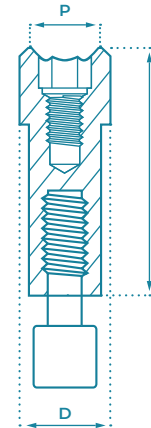
IMPLANT ANALOGS			
TYPE	Slim Ø Platform - 2mm	Standard	Wide
D	Ø3mm	Ø3.75mm	Ø5mm
			
CODE	ANG-SL	ANG	ANGW





OVERDENTURE RESTORATIONS ANALOGS			
TYPE	GdtLoc	Ball	Click
L	14mm	15mm	10.5mm
D	Ø4mm	Ø3.75mm	Ø3.75mm
			
CODE	AFE	AFB	AFL





SCREW-RETAINED RESTORATIONS ANALOGS		
TYPE	Multi Unit 1.6mm	Multi Unit 1.4mm
L	13.5mm	18mm
D	Ø4.75mm	Ø4.9mm
		
CODE	MU-ANG	NM-ANG





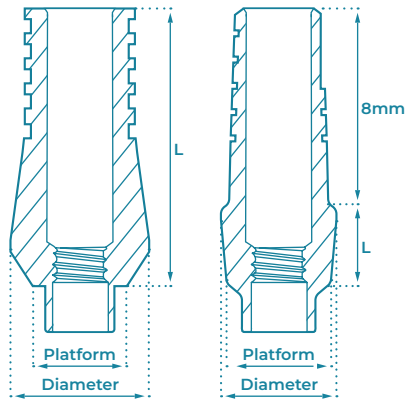
CAD/CAM 3D PRINTING ANALOGS

FOR IMPLANTS		
TYPE	Slim Ø Platform - 2mm	Standard
L	10mm	12mm
D	Ø3mm	Ø3.75mm
		
CODE	ANG3D-SL	ANG3D

FOR SCREW-RETAINED RESTORATIONS		
TYPE	Multi Unit 1.6mm	Multi Unit 1.4mm
L	12mm	9mm
D	Ø4.75mm	Ø4.9mm
		
CODE	MU-ANG3D	NM-ANG3D

ONE-PIECE IMPLANT ANALOGS

FOR ONE-PIECE IMPLANTS		
TYPE	For OPI	For Flexible - OPIB
L	19mm	18mm
		
CODE	AOP	ABOP



STRAIGHT ABUTMENTS

Straight Abutments create a tight seal and strong connection to the implant. Stable and trauma reducing during restoration placement. The Shoulder / Anatomic / Concave Straight Abutments are particularly great for aesthetics, and promote faster healing while protecting the implant.

MATERIAL:






Ti-6Al-4V ELI (Titanium Grade 5).







PACKAGED WITH:

Abutment Fixation Screw SA / SA-SL.

TORQUE TIGHTENING:





25 Ncm (Recommendation).





SLIM		Ø3mm Ø3.5mm	NARROW		Platform - Ø3.8mm Diameter - Ø3.8mm	
L		9mm	5mm	7mm	9mm	11mm
						
CODE		SA9-SL	SAN5	SAN7	SAN9	SAN11




STANDARD					Platform - Ø3.8mm Diameter - Ø4.5mm	
L	5mm	7mm	9mm	11mm	13mm	15mm
						
CODE	SA5	SA7	SA9	SA11	SA13	SA15




WIDE			Platform - Ø3.8mm Diameter - Ø5.5mm	
L	9mm	12mm	13mm	
				
CODE	SAW9	SAW12	SAW13	

SLIM WITH SHOULDER			Platform - Ø3mm Diameter - Ø3.8mm	
L	1mm	2mm	3mm	
				
CODE	SAS1-SL	SAS2-SL	SAS3-SL	

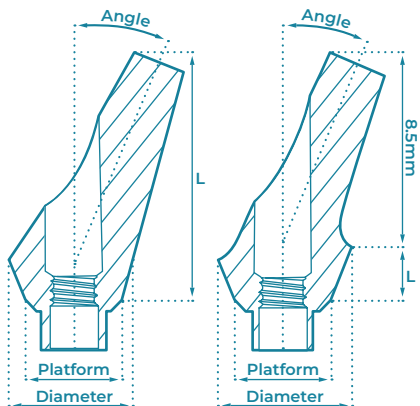
STANDARD WITH SHOULDER				Platform - Ø3.8mm Diameter - Ø4.5mm	
L	1mm	2mm	3mm	4mm	
					
CODE	SAS1	SAS2	SAS3	SAS4	

WIDE WITH SHOULDER				Platform - Ø3.8mm Diameter - Ø5.5mm	
L	1mm	2mm	3mm	4mm	
					
CODE	SAWS1	SAWS2	SAWS3	SAWS4	

ANATOMIC			Platform - Ø3.8mm Diameter - Ø5.2mm	
L	1mm	2mm	3mm	
				
CODE	SAA1	SAA2	SAA3	

CONCAVE				Platform - Ø3.8mm Diameter - Ø5mm	
L	1mm	2mm	3mm	4mm	
					
CODE	SAV1	SAV2	SAV3	SAV4	





ANGULATED ABUTMENTS


Can be used in a single tooth, and partially or totally edentulous situations. Used in the fabrication of Cement-retained restorations, single crowns, or bridges, and can be used in unparalleled implant placement cases for angle compensation.

MATERIAL:
Ti-6Al-4V ELI (Titanium Grade 5).

PACKAGED WITH:
Abutment Fixation Screw SA / SA-SL.

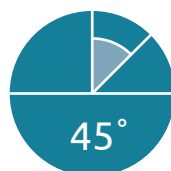
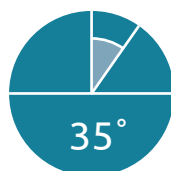
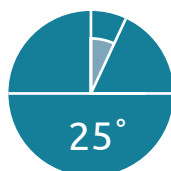
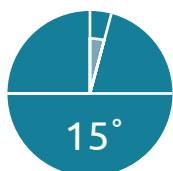
TORQUE TIGHTENING:
25 Ncm (Recommendation).

SLIM 15°		Ø3mm	STANDARD 15°	Platform - Ø3.8mm
		Ø4mm		Diameter - Ø4.5mm
L	9mm		9mm	13mm

			
CODE	ATA15-SL	ATA15	ATA15L

STANDARD 25°	Ø3.8mm	35°	Ø3.8mm	45°	Ø3.8mm
	Ø4.5mm		Ø4.5mm		Ø4.5mm
L	9mm	13mm	9mm	9mm	

				
CODE	ATA25	ATA25L	ATA35	ATA45



The Anatomic and Concave Abutments are particularly great for aesthetics and promote faster healing while protecting the implant.

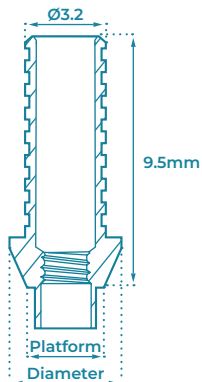
ANATOMIC 15°				Platform - Ø3.8mm Diameter - Ø5.2mm
L	1mm	2mm	3mm	4mm
CODE	ATA1501	ATA1502	ATA1503	ATA1504

ANATOMIC 25°				Platform - Ø3.8mm Diameter - Ø5.2mm
L	1mm	2mm	3mm	4mm
CODE	ATA2501	ATA2502	ATA2503	ATA2504

CONCAVE 15°				Platform - Ø3.8mm Diameter - Ø5mm
L	1mm	2mm	3mm	4mm
CODE	ATV1501	ATV1502	ATV1503	ATV1504

CONCAVE 25°				Platform - Ø3.8mm Diameter - Ø5mm
L	1mm	2mm	3mm	4mm
CODE	ATV2501	ATV2502	ATV2503	ATV2504

TEMPORARY ABUTMENTS



TITANIUM ABUTMENTS

Easily adapts to a gingival tissue, and makes a perfect solid marginal seal between the abutment and the implant.

MATERIAL: Ti-6Al-4V ELI (Titanium Grade 5).

PACKAGED WITH: Abutment Fixation Screw SA.

TORQUE TIGHTENING: 20 Ncm (Recommendation).

TITANIUM ABUTMENTS

Platform - Ø3.8mm
Diameter - Ø4.7mm

TYPE

Anti-rotational

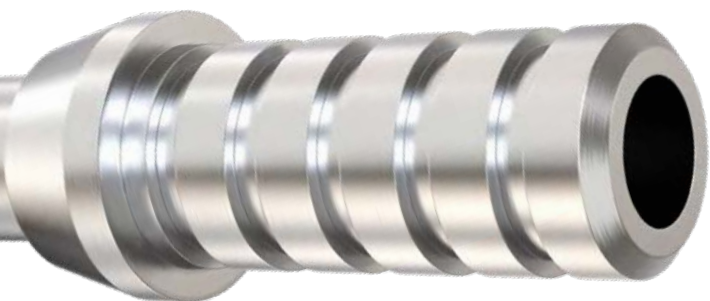
Rotational



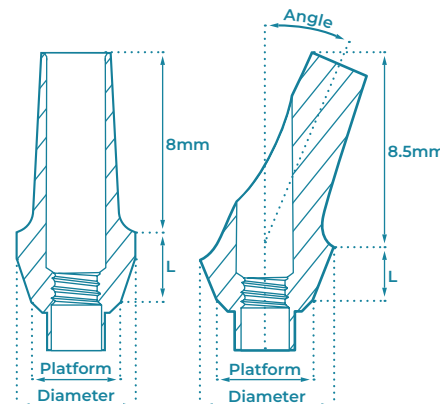
CODE

STAR

STAN



22
Ti
Titanium
47.867



PEEK ABUTMENTS

PEEK is described as an excellent combination of strength and elasticity. It is one of the most chemically resistant materials, biocompatible and aesthetic, with low electrical conductivity. The PEEK Abutments are used for short term rehabilitation.

MATERIAL:

PEEK (Polyether ether ketone).

PACKAGED WITH: Abutment Fixation Screw SA.

TORQUE TIGHTENING: 15 Ncm (Recommendation).

ANATOMIC 0°

Platform - Ø3.8mm
Diameter - Ø4.7mm

L

1mm

2mm

3mm



CODE

PAT1

PAT2

PAT3

ANATOMIC 15°

Platform - Ø3.8mm
Diameter - Ø5.2mm

L

1mm

2mm

3mm



CODE

PAT1501

PAT1502

PAT1503

ANATOMIC 25°

Platform - Ø3.8mm
Diameter - Ø5.2mm

L

1mm

2mm

3mm



CODE

PAT2501

PAT2502

PAT2503

ZIRCONIA ABUTMENTS WITH TITANIUM BASE

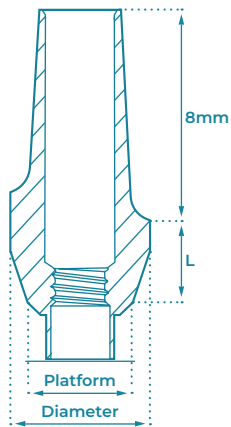
Zirconia exhibits exceptional resistance to high temperatures and corrosion caused by alkalis, acids, saltwater, and various other substances. Lighter than metal, Zirconia possesses remarkable strength, malleability, and ductility. It's chemical and physical characteristics bear resemblance to those of titanium. Highly aesthetic and especially good for anterior restorations.

ABUTMENT MATERIAL: Zirconia (ZrO₂) with Ti-6Al-4V ELI (Titanium Grade 5) Base.

SCREW MATERIAL: Ti-6Al-4V ELI (Titanium Grade 5).

PACKAGED WITH: Fixation Screw for Zirconia Abutments **ZSA**.

TORQUE TIGHTENING: 30 Ncm (Recommendation).

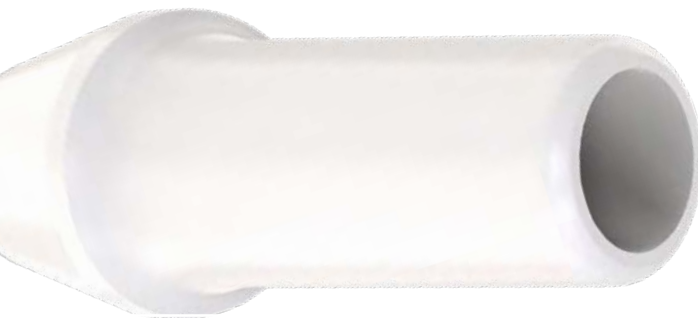


SLIM 0°		Platform - Ø3mm
		Diameter - Ø3.8mm
L	2mm	

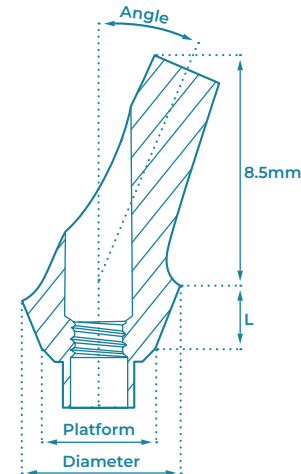
CODE	ZAT1-SL
------	---------

STANDARD 0°			Platform - Ø3.8mm
			Diameter - Ø5.2mm
L	1mm	2mm	3mm

			
CODE	ZAT1	ZAT2	ZAT3



40
Zr
Zirconium
91.224



SLIM 15°		Platform - Ø3mm
		Diameter - Ø5.5mm
L	1.5mm	



CODE	ZAT1501-SL
------	------------

STANDARD 15°			Platform - Ø3.8mm
			Diameter - Ø5.5mm
L	1mm	2mm	3mm

			
CODE	ZAT1501	ZAT1502	ZAT1503

STANDARD 25°			Platform - Ø3.8mm
			Diameter - Ø5.45mm
L	1mm	2mm	3mm

			
CODE	ZAT2501	ZAT2502	ZAT2503

FIXATION SCREW FOR ZIRCONIA ABUTMENTS



CODE	ZSA
------	-----

CASTING ABUTMENTS

Used by dental technicians for constructing Prosthetic restoration.
Provide excellent grip and optimal connection to the implant.
Made from a very strong Plastic material that retains its shape.

MATERIAL:

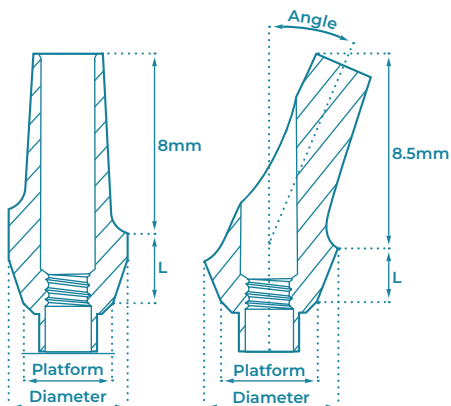
Polyoxymethylene (POM).

PACKAGED WITH:

Abutment Fixation Screw SA / SA-SL.

TORQUE TIGHTENING:

15 Ncm (Recommendation).



ANATOMIC 0°			Platform - Ø3.8mm Diameter - Ø4.5mm
L	1mm	2mm	3mm



CODE	PSA1	PSA2	PSA3
------	------	------	------

ANATOMIC 15°			Platform - Ø3.8mm Diameter - Ø5mm
L	1mm	2mm	3mm

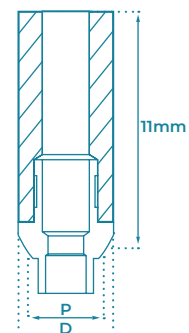
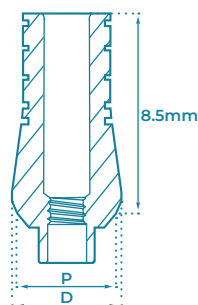
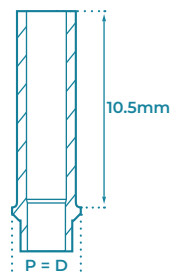
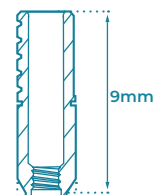


CODE	PAA1501	PAA1502	PAA1503
------	---------	---------	---------

ANATOMIC 25°			Platform - Ø3.8mm Diameter - Ø5mm
L	1mm	2mm	3mm



CODE	PAA2501	PAA2502	PAA2503
------	---------	---------	---------

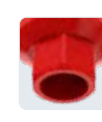


SLIM		(P) Platform - Ø3mm (D) Diameter - Ø3mm
TYPE	Anti-rotational	Rotational



CODE	PCW-SL	PCN-SL
------	--------	--------

NARROW		(P) Platform - Ø3.8mm (D) Diameter - Ø3.8mm
TYPE	Anti-rotational	Rotational



CODE	PCW	PCN
------	-----	-----

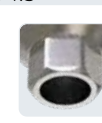
STANDARD		(P) Platform - Ø3.8mm (D) Diameter - Ø4.5mm
TYPE	Anti-rotational	Rotational



CODE	PSAW	PSAN
------	------	------

TITANIUM / CHROME BASE TORQUE TIGHTENING: 30 Ncm (Recommendation).

UCLA		(P) Platform - Ø3.8mm
TYPE	Standard Ø4.5	Wide Ø5.4



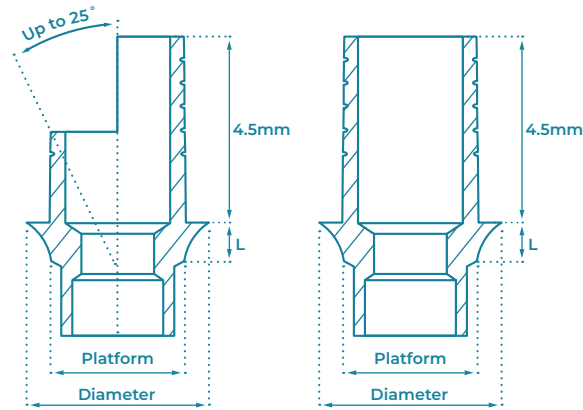
CODE	PTB	PTBW
------	-----	------

CHROME COBALT BASE			(D) Diameter - Ø4.5mm
TYPE	Anti-rotational Ø3.0	Anti-rotational Ø3.8	Rotational Ø3.8



CODE	CCBW-SL	CCBW	CCBN
------	---------	------	------

CAD/CAM ABUTMENTS



GDT 3D CAD/CAM libraries make it easy to design and create for your implant platforms.

Fully supported by the top CAD/CAM systems: **Exocad** and **3Shape**.

Our libraries enable precise computerized planning by scanning implants and abutments of all types, as the scanned information is used to create restorations. The CAD/CAM technology simplifies the process, ensuring accuracy and speed.

MATERIAL: Ti-6Al-4V ELI (Titanium Grade 5).

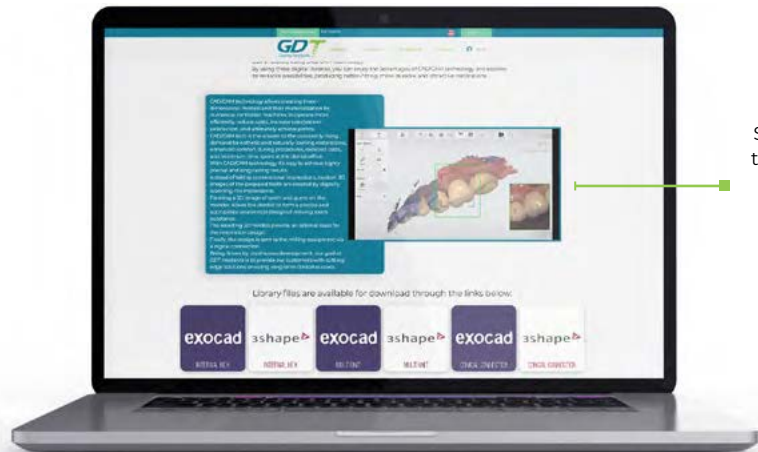
PACKAGED WITH: Abutment Fixation Screw **SA / SA-SL / MU-SA / NM-SA**.

TORQUE TIGHTENING: **SA screw** - 25 Ncm (Recommendation).
MU-SA screw, and **NM-SA screw**- 15 Ncm (Recommendation).



Scan **QR code** or refer to GDT Implants website to download our libraries: www.gdentalt.com/cadcam

exocad **3shape**



Scan **QR code** to watch video



SLIM	P - Ø3mm	STRAIGHT TITANIUM BASES	Platform - Ø3.8mm
	D - Ø3.75mm		Diameter - Ø4.5mm



CODE	TBS-SL	TBS	TBS1	TBS2	TBS3	TBS4			
------	--------	-----	------	------	------	------	--	--	--

SLIM	P - Ø3mm	STRAIGHT TITANIUM BASES	Platform - Ø3.8mm
	D - Ø3.75mm		Diameter - Ø4.5mm



CODE	TBSN-SL	TBSN	TBSN1	TBSN2	TBSN3	TBSN4			
------	---------	------	-------	-------	-------	-------	--	--	--

ANGULATED TITANIUM BASES									Platform - Ø3.8mm Diameter - Ø4.5mm
Anti-Rotational									
TYPE									
L	0.5mm	1mm	2mm	3mm	4mm				



CODE	ATBS	ATBS1	ATBS2	ATBS3	ATBS4				
------	------	-------	-------	-------	-------	--	--	--	--

ANGULATED TITANIUM BASES									Platform - Ø3.8mm Diameter - Ø4.5mm
Rotational									
TYPE									
L	0.5mm	1mm	2mm	3mm	4mm				



CODE	ATBSN	ATBSN1	ATBSN2	ATBSN3	ATBSN4				
------	-------	--------	--------	--------	--------	--	--	--	--

MOTOR MOUNT FOR ANGULATED TITANIUM BASE									
		TYPE	L (mm)	CODE					
		Ø1.7	24	MMAT					



INTERNAL HEX

Cement-Retained

TITANIUM SCAN BODY

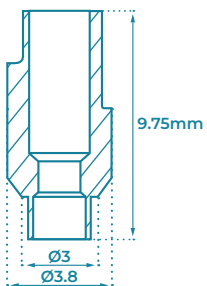
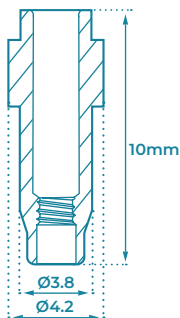
TYPE Slim
Platform - 2mm

Standard



CODE SBA-SL

SBATI



3D PRINTING ANALOG

TYPE Slim
Platform - 2mm

Standard

P Ø3mm

Ø3.8mm

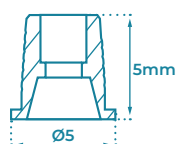
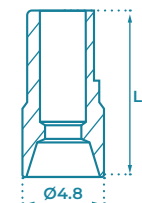
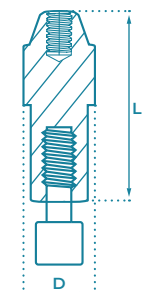
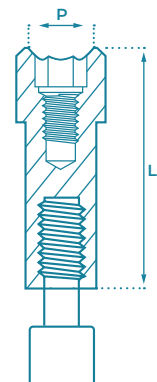
L 10mm

10mm



CODE ANG3D-SL

ANG3D



FOR SCREW-RETAINED RESTORATIONS

TYPE MULTI UNIT 1.6mm

MULTI UNIT 1.4mm

3D PRINTING
ANALOG



CODE L 12mm D Ø4.8mm MU-ANG3D

L 9mm D Ø4.9mm NM-ANG3D

SCAN BODY



CODE L 10mm MU-SBA

7mm NM-SB7

10mm NM-SB10

13mm NM-SB13

TITANIUM BASE



CODE MU-SA Screw included
MU-TBS

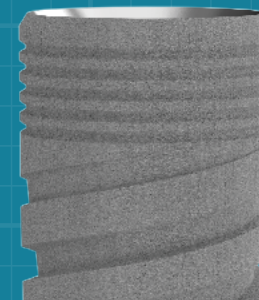
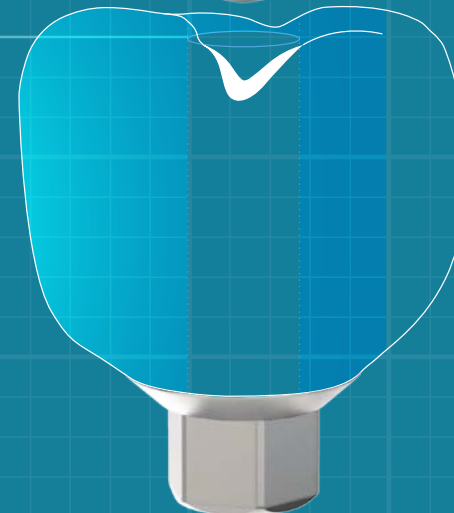
NM-SA Screw included
NM-TBS

INTERNAL HEXAGON PEOSTHETICS

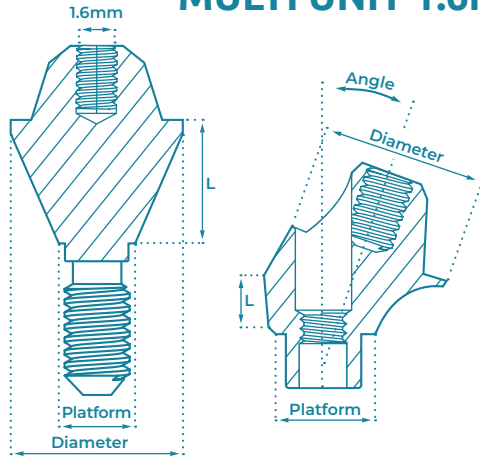
SCREW-RETAINED RESTORATION



SCREW ACCESS HOLE



MULTI UNIT 1.6mm ABUTMENTS



Our range of Multi Unit 1.6mm abutments provides a selection of gingival heights, and fits various implant angulation positions.

These Multi Unit abutments are suitable for both slim and standard implant platforms, ensuring compatibility with different implant systems.

- 1.6mm Prosthetic connection.






MATERIAL:
Ti-6Al-4V ELI (Titanium Grade 5).

PACKAGED WITH:
Abutment Fixation Screw **SA / SA-SL**, and Abutment Handle (**Only with Angulated abutments*)

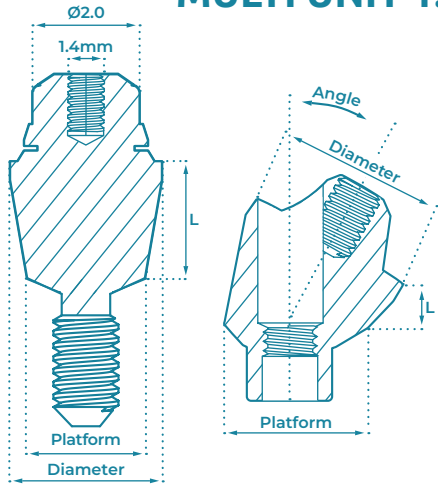
TORQUE TIGHTENING:
35 Ncm for Abutments (Recommendation).
20 Ncm for Prosthetic Parts (Recommendation).

COMPONENTS

TITANIUM SLEEVE				PLASTIC SLEEVE				OPEN TRANSFER			
D	Ø4.8mm	L	12mm	D	Ø4.8mm	L	12mm	D	Ø5mm	L	15mm
											
MU-SA Screw is included				MU-SA Screw is included							
MU-TSL				MU-PSL				MU-TOT			
CLOSED TRANSFER				ANALOG				HEALING CAP			
D	Ø4.8mm	L	72mm	D	Ø4.8mm	L	13.5mm	D	Ø4.8mm	L	5.2mm
											
MU-SA Screw is included								MU-SA Screw is included			
MU-TCT				MU-ANG				MU-HC			
TITANIUM BASE				3D PRINTING ANALOG				SCAN BODY			
D	Ø5mm	L	4.8mm	D	Ø4.8mm	L	12mm	D	Ø4.8mm	L	10mm
											
MU-SA Screw is included								MU-SA Screw is included			
MU-TBS				MU-ANG3D				MU-SBA			
ABUTMENT HANDLE								FIXATION SCREW			
											
Premounted on angulated abutments								MU-SA			

SLIM 0°					Platform - Ø3mm Diameter - Ø4.8mm	
L	1mm	2mm	3mm	4mm		
						
CODE	MU1-SL	MU2-SL	MU3-SL	MU4-SL		
STANDARD 0°					Platform - Ø3.8mm Diameter - Ø4.8mm	
L	1mm	2mm	3mm	4mm	5mm	
						
CODE	MU1	MU2	MU3	MU4	MU5	
SLIM 17°		D - Ø3mm D - Ø4.8mm	ANGULATED 17°		Platform - Ø3.8mm Diameter - Ø4.8mm	
L	1mm	2mm	1mm	2mm	3mm	
						
CODE	MU-17-1-SL	MU-17-2-SL	MU-17-1	MU-17-2	MU-17-3	
SLIM 30°		D - Ø3mm D - Ø4.8mm	ANGULATED 30°		Platform - Ø3.8mm Diameter - Ø4.8mm	
L	1mm	2mm	1mm	2mm	3mm	
						
CODE	MU-30-1-SL	MU-30-2-SL	MU-30-1	MU-30-2	MU-30-3	
ANGULATED 45°					Platform - Ø3.8mm Diameter - Ø4.8mm	
L	1mm					
						
CODE	MU-45-1					

MULTI UNIT 1.4mm ABUTMENTS



Our range of Multi Unit 1.4mm abutments provides a selection of gingival heights, and fits various implant angulation positions.

These abutments feature an angle selection angle of up to 60°, enabling them to effectively address implant divergence of up to 120° in all directions, ensuring optimal parallel alignment.

They are suitable for a wide range of restorations, whether it involves a few teeth or a full-jaw restoration.

- 1.4mm Prosthetic connection.

MATERIAL:
Ti-6Al-4V ELI (Titanium Grade 5).

PACKAGED WITH:

- Abutment Handle.
- Fixation Screw (**Only with Angulated Abutments*).

TORQUE TIGHTENING:

35 Ncm for Abutments (Recommendation).
20 Ncm for Prosthetic Parts (Recommendation).

COMPONENTS


TITANIUM SLEEVE				PLASTIC SLEEVE				OPEN TRANSFER			
D	Ø4.9mm	L	12mm	D	Ø4.9mm	L	12mm	D	Ø4.9mm	L	16mm
											
NM-TSL				NM-PSL				NM-TOT			
NM-SA Screw is included				NM-SA Screw is included							
CLOSED TRANSFER				ANALOG				HEALING CAP			
D	Ø4.9mm	L	8mm	D	Ø4.9mm	L	18mm	D	Ø4.9mm	L	4.8mm
											
NM-TCT				NM-ANG				NM-HC			
NM-SA Screw is included								NM-SA Screw is included			
TITANIUM BASE				3D PRINTING ANALOG				SCAN BODY			
D	Ø4.9mm	L	4.5mm	D	Ø4.9mm	L	9mm	D	Ø4.9mm	L	7mm 10mm 13mm
											
NM-TBS				NM-ANG3D				NM-SB7 NM-SB10 NM-SB13			
NM-SA Screw is included											
ABUTMENT HANDLE				FIXATION SCREW				NM-SA			
Premounted On Straight											
On Angulated											

SLIM 0°					Platform - Ø3mm Diameter - Ø4.9mm
L	1mm	2mm	3mm	4mm	5mm

					
CODE	NM1-SL	NM2-SL	NM3-SL	NM4-SL	NM5-SL

STANDARD 0°					Platform - Ø3.8mm Diameter - Ø4.9mm
L	1mm	2mm	3mm	4mm	5mm

					
CODE	NM1	NM2	NM3	NM4	NM5

FOR STANDARD AND SLIM 0°		L (mm)	CODE
		6	NM-HD06
		10	NM-HD10

SLIM 17°		P - Ø3mm D - Ø4.9mm	ANGULATED 17°				Platform - Ø3.8mm Diameter - Ø4.9mm
L	2mm	3mm	2mm	3mm	4mm	5mm	

						
CODE	NM-17-2-SL	NM-17-3-SL	NM-17-2	NM-17-3	NM-17-4	NM-17-5

SLIM 30°		P - Ø3mm D - Ø4.9mm	ANGULATED 30°				Platform - Ø3.8mm Diameter - Ø4.9mm
L	2mm	3mm	2mm	3mm	4mm	5mm	

						
CODE	NM-30-2-SL	NM-30-3-SL	NM-30-2	NM-30-3	NM-30-4	NM-30-5

SLIM 45°		P - Ø3mm D - Ø4.9mm	ANGULATED 45°				Platform - Ø3.8mm Diameter - Ø4.9mm
L	2mm	3mm	2mm	3mm	4mm	5mm	

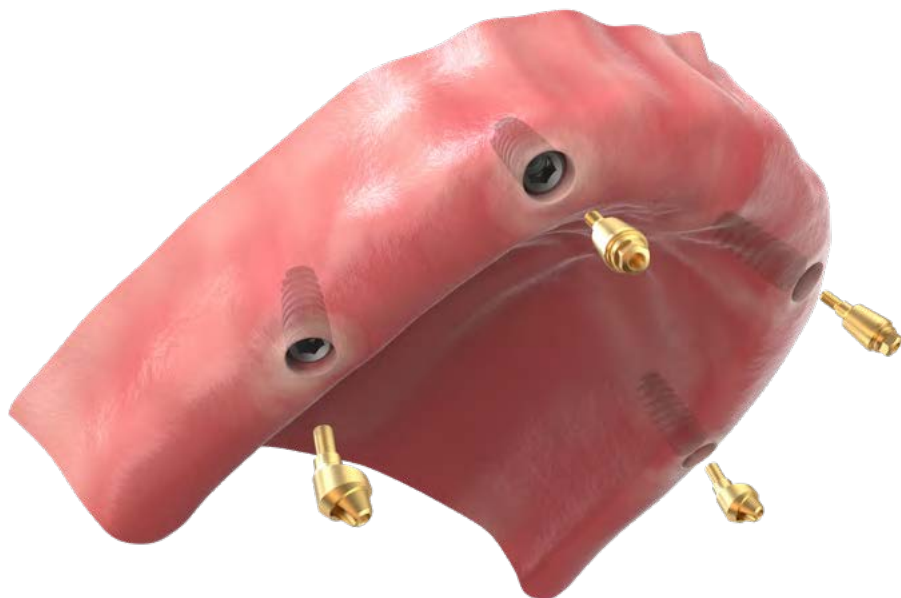


CODE	NM-45-2-SL	NM-45-3-SL	NM-45-2	NM-45-3	NM-45-4	NM-45-5
------	------------	------------	---------	---------	---------	---------

ANGULATED 52°		Platform - Ø3.8mm Diameter - Ø4.9mm	ANGULATED 60°		Platform - Ø3.8mm Diameter - Ø4.9mm
L	2mm		2mm		

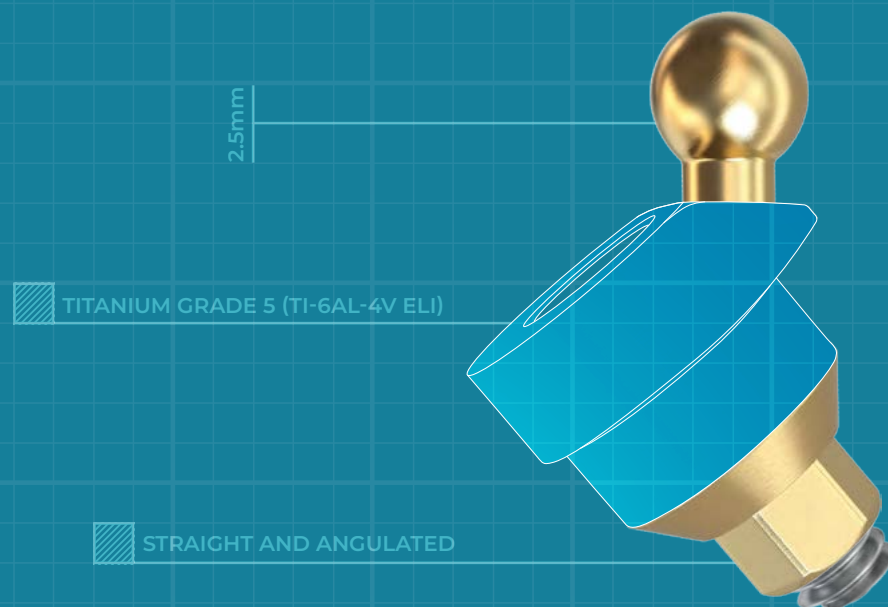
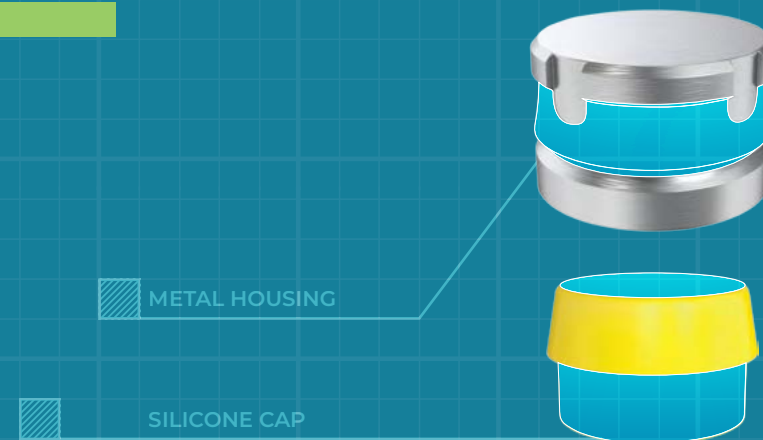


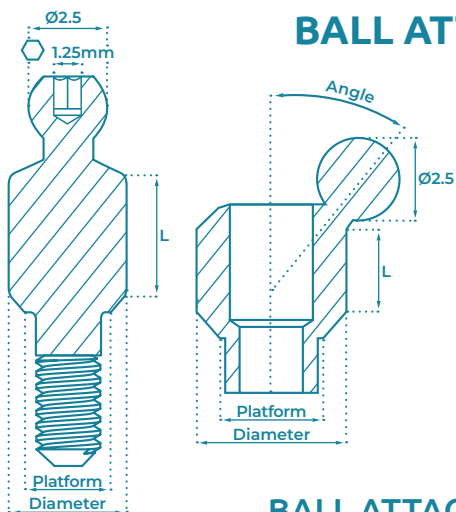
CODE	NM-52-2	NM-60-2
------	---------	---------



INTERNAL HEXAGON PEOSTHETICS

OVERDENTURE RESTORATION





BALL ATTACHMENT

Designed to provide a secure and stable connection between a denture and a dental implant.

Consist of two components: a **male component**, which is a ball-shaped component that is placed on the implant, and a **female component**, which is a socket-shaped component that is placed on the denture.

The two components are then locked together, creating a secure connection.

MATERIAL:

Ti-6Al-4V ELI (Titanium Grade 5).

PACKAGED WITH:

Abutment Fixation Screw **SA**.

(*Only with Angulated Abutments).

TORQUE TIGHTENING:

25 Ncm (Recommendation).

BALL ATTACHMENT PARTS

EXTRA SOFT SILICONE CAP		SOFT SILICONE CAP		STANDARD SILICONE CAP	
Retention	0.5 kg / 1.1 lbs	Retention	0.9 kg / 2 lbs	Retention	1.3 kg / 2.9 lbs



YELLOW

SYCB



PINK

SPCB



CLEAR

SWCB

LABORATORY USE SILICONE CAP	
Retention	0 kg / lbs



BLACK

SBCB

PROTECTIVE DISC	
-----------------	--



CLEAR

DPB

METAL HOUSING	
---------------	--



MTCB

ANALOG		IMPRESSION COPING TRANSFER	
--------	--	----------------------------	--



AFB



TFB

INSERTION AND
EXTRACTION
DRIVER



HCP

SLIM 0°						Platform - Ø3mm Diameter - Ø3.6mm	
L	1mm	2mm	3mm	4mm	5mm	6mm	



CODE	BAT1-SL	BAT2-SL	BAT3-SL	BAT4-SL	BAT5-SL	BAT6-SL
------	---------	---------	---------	---------	---------	---------

STANDARD 0°						Platform - Ø3.8mm Diameter - Ø4mm	
L	0.5mm	1mm	2mm	3mm	4mm	5mm	6mm



CODE	BAT05	BAT1	BAT2	BAT3	BAT4	BAT5	BAT6	BAT7
------	-------	------	------	------	------	------	------	------

ANGULATED 18°				Platform - Ø3.8mm Diameter - Ø4.6mm	
L	1mm	2mm	3mm		



CODE	BAT-1810	BAT-1820	BAT-1830
------	----------	----------	----------

ANGULATED 30°				Platform - Ø3.8mm Diameter - Ø4.6mm	
L	1mm	2mm	3mm		



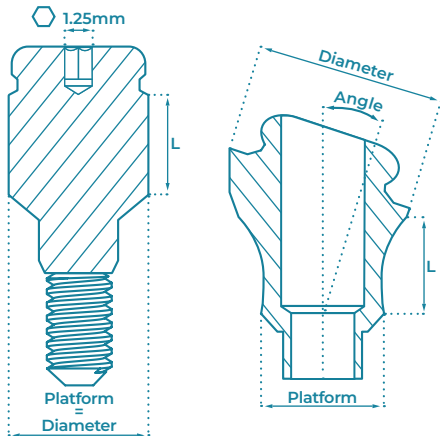
CODE	BAT-3010	BAT-3020	BAT-3030
------	----------	----------	----------

ANGULATED 40°				Platform - Ø3.8mm Diameter - Ø4.6mm	
L	1mm	2mm	3mm		



CODE	BAT-4010	BAT-4020	BAT-4030
------	----------	----------	----------

CLICK ATTACHMENT



Removable denture attachments system that provides a secure and stable connection between a denture and a dental implant.

They consist of two components: a **male component**, which is placed on the implant, and a **female component**, which is placed on the denture.

The two components are locked ("clicked") together, creating a secure connection.

MATERIAL:

Ti-6Al-4V ELI (Titanium Grade 5).

PACKAGED WITH:





Abutment Fixation Screw **SA**.
(*Only with Angulated Abutments).







TORQUE TIGHTENING:





25 Ncm (Recommendation).





CLICK ATTACHMENT PARTS

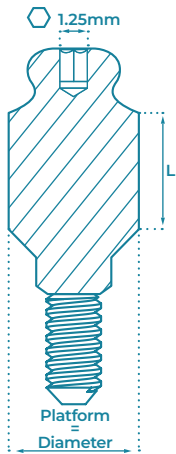
EXTRA SOFT SILICONE CAP		SOFT SILICONE CAP		STANDARD SILICONE CAP	
Retention	0.6 kg / 1.3 lbs	Retention	1.2 kg / 2.6 lbs	Retention	1.8 kg / 4.0 lbs
	YELLOW		PINK		CLEAR
SYCL		SPCL		SWCL	
STRONG SILICONE CAP		LABORATORY USE SILICONE CAP		PROTECTIVE DISC	
Retention	2.5 kg / 5.5 lbs	Retention	0 kg / lbs		
	PURPLE		BLACK		
STCL		SBCL		DP	
METAL HOUSING		ANALOG		IMPRESSION COPING TRANSFER	
					
MTCL		AFL		TFL	
INSERTION AND EXTRACTION DRIVER				HLC	

SLIM 0°				Platform - Ø3mm	
				Diameter - Ø4.1mm	
L	1mm	2mm	3mm	4mm	
					
CODE	LOC1-SL	LOC2-SL	LOC3-SL	LOC4-SL	

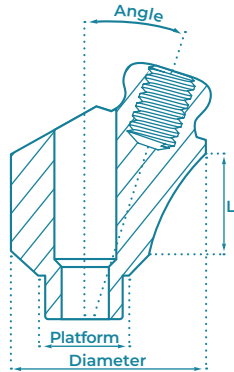
STANDARD 0°				Platform - Ø3.8mm		
				Diameter - Ø3.8mm		
L	1mm	2mm	3mm	4mm	5mm	6mm
						
CODE	LOC1	LOC2	LOC3	LOC4	LOC5	LOC6

ANGULATED 18°				Platform - Ø3.8mm	
				Diameter - Ø5.2mm	
L	0.5mm	1mm	2mm	3mm	
					
CODE	LOC-1805	LOC-1810	LOC-1820	LOC-1830	

ANGULATED 30°				Platform - Ø3.8mm	
				Diameter - Ø5.2mm	
L	0.5mm	1mm	2mm	3mm	
					
CODE	LOC-3005	LOC-3010	LOC-3020	LOC-3030	



GDTLOC ATTACHMENT



Consist of two components: a **male component**, which is placed on the implant, and a **female component**, which is placed on the denture.

The metal housing, together with the Silicone Caps, create a rotational mechanism pivoting ability. It allows a divergence of up to 30° of the implants and a more significant area of contact between the male and female components.

MATERIAL:

Ti-6Al-4V ELI (Titanium Grade 5).

PACKAGED WITH:

Abutment Fixation Screw **SA**, and Abutment Handle (*Only with Angulated Abutments).

TORQUE TIGHTENING:

25 Ncm (Recommendation).

GDTLOC ATTACHMENT PARTS

EXTRA SOFT SILICONE CAP		SOFT SILICONE CAP		STANDARD SILICONE CAP	
Retention	0.6 kg / 1.3 lbs	Retention	1.2 kg / 2.6 lbs	Retention	1.8 kg / 4.5 lbs



YELLOW

SYCG



PINK

SPCG



CLEAR

SWCG

STRONG SILICONE CAP		LABORATORY USE SILICONE CAP		PROTECTIVE DISC	
Retention	2.7 kg / 5.5 lbs	Retention	0 kg / lbs		



PURPLE

STCG



BLACK

SBCG



PINK

DPG

METAL HOUSING		ANALOG		IMPRESSION COPING TRANSFER	
---------------	--	--------	--	----------------------------	--



MTCC



AFE



TFL

INSERTION AND EXTRACTION DRIVER		HCP	
---------------------------------	--	-----	--



HCP

ABUTMENT HANDLE		Premounted on Angulated Abutments	
-----------------	--	-----------------------------------	--



0°						Platform - Ø3.8mm
						Diameter - Ø3.8mm
L	0.5mm	1mm	2mm	3mm	4mm	5mm



CODE	EOT05	EOT10	EOT20	EOT30	EOT40	EOT50
------	-------	-------	-------	-------	-------	-------

ANGULATED 18°					Platform - Ø3.8mm
					Diameter - Ø5.2mm
L	1mm	2mm	3mm	4mm	



CODE	EOT-1810	EOT-1820	EOT-1830	EOT-1840
------	----------	----------	----------	----------

ANGULATED 30°				Platform - Ø3.8mm
				Diameter - Ø5.2mm
L	1mm	2mm	3mm	4mm



CODE	EOT-3010	EOT-3020	EOT-3030	EOT-3040
------	----------	----------	----------	----------



ALL SOLUTION FOR A PERFECT **S**MILE



www.gdentalt.com



Global Dental Transfers Ltd.

M Tower Building
Recha Freier 9
Beer Sheva
8489440
Israel

Tel: +1 929 442 0773
Email: Info@gdentalt.com