

MOR - Spiral Implant

MOR Implant is a highly compatible implant solution based on the popular **Internal Hexagon connection** with **SLA - Sand blast, double etched in acid surface treatment**. With its tapered body and exceptional self-drilling capabilities, it establishes a strong and stable connection suitable for immediate loading. MOR Implant adapts to various bone types and augmentation procedures, making it an ideal choice for a wide range of patients.

CONNECTION:

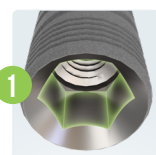
- Internal Hexagon 2.42mm.
- Slim Platform - Internal Hexagon 2.0mm.

MATERIAL: Ti-6Al-4V ELI (Titanium Grade 5).

SURFACE TREATMENT: SLA - Sandblast, Large Grit, Acid-etch.

STERILIZATION: Gamma irradiation.

SPECIFICATIONS:



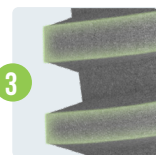
CONNECTION AND PLATFORM SWITCHING

- Internal Hexagon - One universal platform for all diameters.
- Minimizes crestal bone loss, promotes bone and soft tissue growth, improves natural aesthetics.



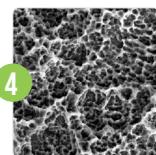
TAPERED BODY WITH SPIRAL DESIGN

- Optimal soft tissue support.
- Excellent primary stability.
- Improves bone condensation during insertion.



AGGRESSIVE APICAL THREADS

- Allow for more aggressive bone engagement for indications such as immediate extraction sockets, poor bone quality, and immediate loading.



SLA - SANDBLAST, LARGE GRIT, ACID-ETCH

- Enhances dental implant stability and osseointegration, improving long-term success rates.



SELF TAPPING SYSTEM

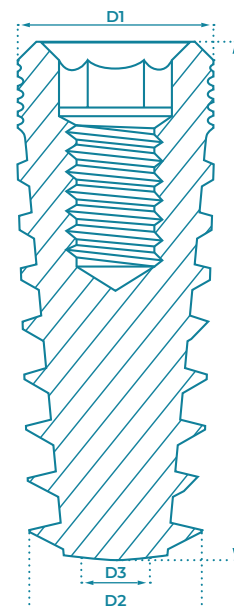
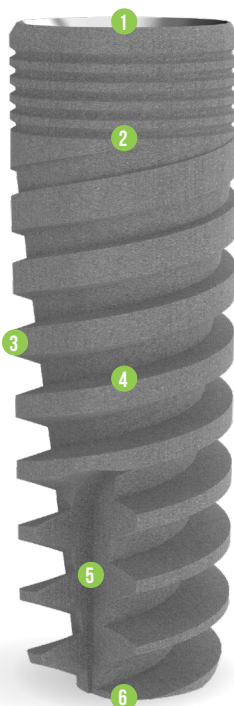
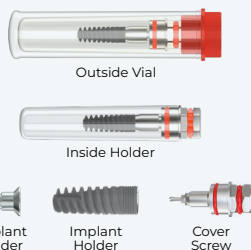
- Self-tapping.
- Self-drilling.
- Increases load distribution.



ROUND APEX

- Enhances implant stability.
- Protects sinus from perforation, and minimizes the risk of anatomical structure damage.

PACKAGE CONTENT



D1 (mm)	D2 (mm)	D3 (mm)	L (mm)	CODE
Ø3.0	Ø2.75	Ø2.3	10	S3010
			11.5	S3011
			13	S3013
			16	S3016
Ø3.5	Ø3.1	Ø2.4	8	M3508
			10	M3510
			11.5	M3511
			13	M3513
			16	M3516
Ø3.75	Ø3.75	Ø3.1	8	M3708
			10	M3710
			11.5	M3711
			13	M3713
			16	M3716
Ø4.2	Ø3.95	Ø3.2	6	M4206
			8	M4208
			10	M4210
			11.5	M4211
			13	M4213
Ø5.0	Ø4.6	Ø4.1	16	M4216
			6	M5006
			8	M5008
			10	M5010
			11.5	M5011
Ø6.0	Ø5.6	Ø5.1	13	M5013
			16	M5016
			6	M6006
			8	M6008
			10	M6010
			11.5	M6011
			13	M6013

Drilling Protocol

Drilling Drill	Ø2.0	Ø2.5	Ø2.8	Ø3.2	Ø2.5x3.75	Ø2.7x4.0	Ø3.65	Countersink Ø3.75x4.2	Ø4.2	Ø4.5	Ø5.2	Countersink Ø5.0x6.0
Ø3.0	Soft Bone	Hard Bone										
Ø3.5	Soft Bone	Hard Bone										
Ø3.75	Soft Bone	Hard Bone										
Ø4.2	Soft Bone	Hard Bone										
Ø5.0	Soft Bone	Hard Bone										
Ø6.0	Soft Bone	Hard Bone										

The suggested drilling protocol is only a recommendation and should not replace the doctor's opinion.

RBM - Spiral Implant

RBM Implant is a highly compatible implant solution based on the popular **Internal Hexagon connection** with **RBM - Resorbable Blast Media surface treatment**. With its tapered body and exceptional self-drilling capabilities, it establishes a strong and stable connection suitable for immediate loading. RBM Implant adapts to various bone types and augmentation procedures, making it an ideal choice for a wide range of patients.

CONNECTION:

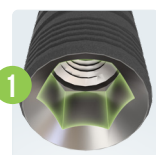
- Internal Hexagon 2.42mm.
- Slim Platform - Internal Hexagon 2.0mm.

MATERIAL: Ti-6Al-4V ELI (Titanium Grade 5).

SURFACE TREATMENT: RBM - Resorbable Blast Media.

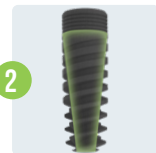
STERILIZATION: Gamma irradiation.

SPECIFICATIONS:



CONNECTION AND PLATFORM SWITCHING

- Internal Hexagon - One universal platform for all diameters.
- Minimizes crestal bone loss, promotes bone and soft tissue growth, improves natural aesthetics.



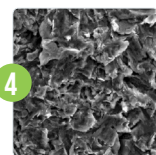
TAPERED BODY WITH SPIRAL DESIGN

- Optimal soft tissue support.
- Excellent primary stability.
- Improves bone condensation during insertion.



AGGRESSIVE APICAL THREADS

- Allow for more aggressive bone engagement for indications such as immediate extraction sockets, poor bone quality, and immediate loading.



RBM - RESORBABLE BLAST MEDIA

- Promotes faster and stronger bone integration, enhancing the stability of dental implants.



SELF TAPPING SYSTEM

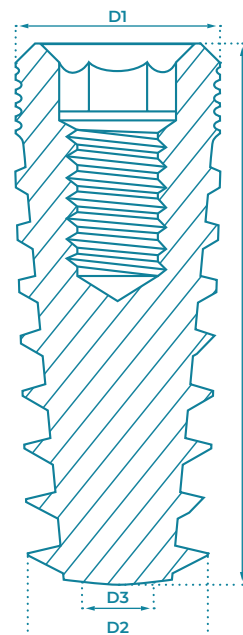
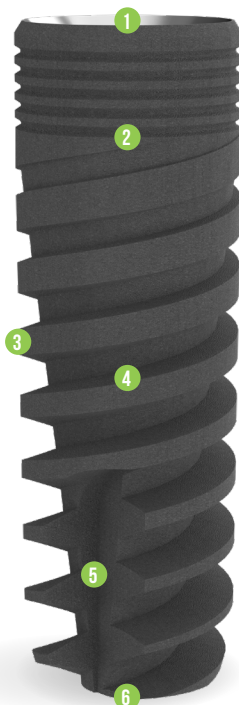
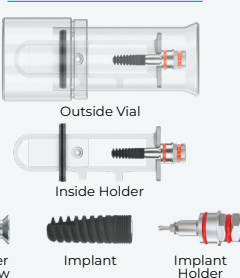
- Self-tapping.
- Self-drilling.
- Increases load distribution.



ROUND APEX

- Enhances implant stability.
- Protects sinus from perforation, and minimizes the risk of anatomical structure damage.

PACKAGE CONTENT



Drilling Protocol

	Marking Drill	Ø2.0	Ø2.5	Ø2.8	Ø3.2	Ø2.5x3.75	Ø2.7x4.0	Ø3.65	Countersink Ø3.75x4.2	Ø4.2	Ø4.5
Ø3.0	Soft Bone	●	●	●	●	●	●	●	●	●	●
Ø3.0	Hard Bone	●	●	●	●	●	●	●	●	●	●
Ø3.5	Soft Bone	●	●	●	●	●	●	●	●	●	●
Ø3.5	Hard Bone	●	●	●	●	●	●	●	●	●	●
Ø3.75	Soft Bone	●	●	●	●	●	●	●	●	●	●
Ø3.75	Hard Bone	●	●	●	●	●	●	●	●	●	●
Ø4.2	Soft Bone	●	●	●	●	●	●	●	●	●	●
Ø4.2	Hard Bone	●	●	●	●	●	●	●	●	●	●
Ø5.0	Soft Bone	●	●	●	●	●	●	●	●	●	●
Ø5.0	Hard Bone	●	●	●	●	●	●	●	●	●	●

The suggested drilling protocol is only a recommendation and should not replace the doctor's opinion.

ABA - Spiral Implant

ABA Implant is a highly compatible implant solution based on the popular **Internal Hexagon connection with SLA - Sand blast, double etched in acid surface treatment.** With its tapered body and exceptional self-drilling capabilities, it establishes a strong and stable connection suitable for immediate loading. ABA Implant can be used in all types of surgical procedures - two stages, immediate loading, and flapless for all types of ridges. It works especially well on narrow ridges without needing prior bone grafting.

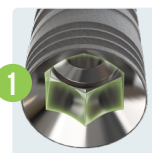
CONNECTION: Internal Hexagon 2.42mm.

MATERIAL: Ti-6Al-4V ELI (Titanium Grade 5).

SURFACE TREATMENT: SLA - Sandblast, Large Grit, Acid-etch.

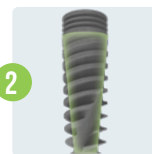
STERILIZATION: Gamma irradiation.

SPECIFICATIONS:



CONNECTION AND PLATFORM SWITCHING

- Internal Hexagon 2.42mm - One universal platform for all diameters.
- Minimizes crestal bone loss, promotes bone and soft tissue growth, improves natural aesthetics.



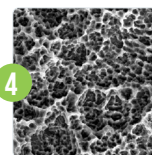
TAPERED BODY WITH SPIRAL DESIGN

- Optimal soft tissue support.
- Excellent primary stability.
- Improves bone condensation during insertion.



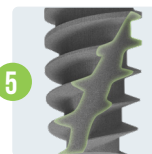
AGGRESSIVE APICAL THREADS

- Allow for more aggressive bone engagement for indications such as immediate extraction sockets, poor bone quality, and immediate loading.



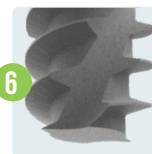
SLA - SANDBLAST, LARGE GRIT, ACID-ETCH

- Enhances dental implant stability and osseointegration, improving long-term success rates.



SELF TAPPING SYSTEM

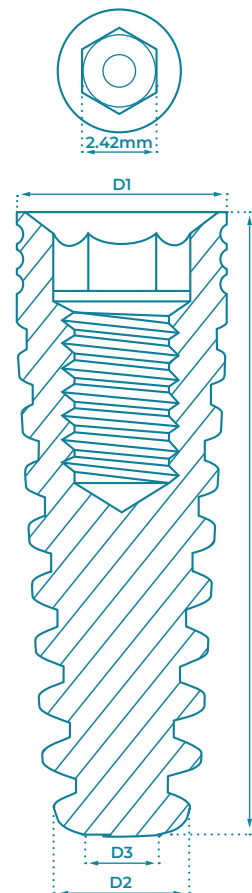
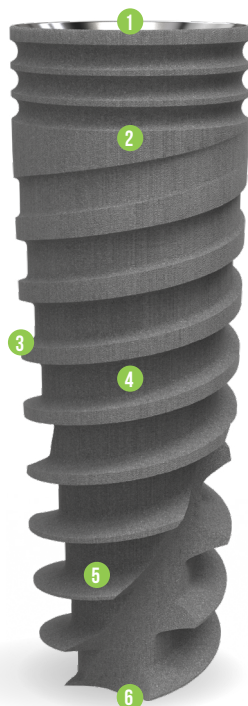
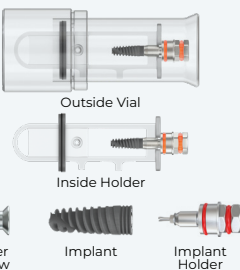
- Self-tapping.
- Self-drilling.
- Increases load distribution.



APEX

- Enhances implant stability.
- Sharp and deep threads

PACKAGE CONTENT



D1 (mm)	D2 (mm)	D3 (mm)	L (mm)	CODE
Ø3.5	Ø3.1	Ø2.4	8	A3508
			10	A3510
			11.5	A3511
			13	A3513
			16	A3516
Ø3.75	Ø3.75	Ø3.1	8	A3708
			10	A3710
			11.5	A3711
			13	A3713
			16	A3716
Ø4.2	Ø3.95	Ø3.2	6	A4206
			8	A4208
			10	A4210
			11.5	A4211
			13	A4213
Ø5.0	Ø4.6	Ø4.1	16	A4216
			6	A5006
			8	A5008
			10	A5010
			11.5	A5011
Ø6.0	Ø5.6	Ø5.1	13	A5013
			16	A5016
			6	A6006
			8	A6008
			10	A6010
			11.5	A6011
			13	A6013

Drilling Protocol

		Marking Drill	Ø2.0	Ø2.5	Ø2.8	Ø3.2	Ø2.5x3.75	Ø2.7x4.0	Ø3.65	Countersink Ø3.75x4.2	Ø4.2	Ø4.5	Ø5.2	Countersink Ø5.0x6.0
Ø3.5	Soft Bone	●	○	●	●	●	●	●	●	●	●	●	●	●
	Hard Bone	●	○	●	●	●	●	●	●	●	●	●	●	●
Ø3.75	Soft Bone	●	○	●	●	●	●	●	●	●	●	●	●	●
	Hard Bone	●	○	●	●	●	●	●	●	●	●	●	●	●
Ø4.2	Soft Bone	●	○	●	●	●	●	●	●	●	●	●	●	●
	Hard Bone	●	○	●	●	●	●	●	●	●	●	●	●	●
Ø5.0	Soft Bone	●	○	●	●	●	●	●	●	●	●	●	●	●
	Hard Bone	●	○	●	●	●	●	●	●	●	●	●	●	●
Ø6.0	Soft Bone	●	○	●	●	●	●	●	●	●	●	●	●	●
	Hard Bone	●	○	●	●	●	●	●	●	●	●	●	●	●

The suggested drilling protocol is only a recommendation and should not replace the doctor's opinion.

EVA - Mountless Implant

EVA Implant is a highly compatible implant solution based on the popular **Internal Hexagon connection** with **RBM - Resorbable Blast Media surface treatment**. It is ideal for both one-stage and two-stage implantation protocols and performs exceptionally well across various types of bone tissue, including immediate loading in post-extraction sockets. The implant's cylindrical-conical body and progressive threading ensure exceptional fixation and a bone-condensing effect, even in cases where bone quality is challenging. It features a reverse-tapered neck and platform switching to optimize the preservation of bone and soft tissue volumes, providing excellent aesthetics and stability.

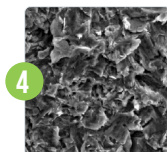
CONNECTION: Internal Hexagon 2.42mm.

MATERIAL: Ti-6Al-4V ELI (Titanium Grade 5).

SURFACE TREATMENT: RBM - Resorbable Blast Media.

STERILIZATION: Gamma irradiation.

SPECIFICATIONS:



CONNECTION AND PLATFORM SWITCHING

- Internal Hexagon 2.42mm - One universal platform for all diameters.
- Minimizes crestal bone loss, promotes bone and soft tissue growth, improves natural aesthetics.

CYLINDRICAL - CONICAL SHAPE

- Offers unparallel fixation and a bone-condensing effect, even in challenging bone quality scenarios.
- Enhances implant stability.

DOUBLE PROGRESSIVE THREADS

- Enhances load distribution within the cortical bone, promoting strength and durability.
- Deeper threads towards the bottom facilitate bone condensing in the cancellous layer, increasing implant stability and longevity.

RBM - RESORBABLE BLAST MEDIA

- Promotes faster and stronger bone integration, enhancing the stability of dental implants.

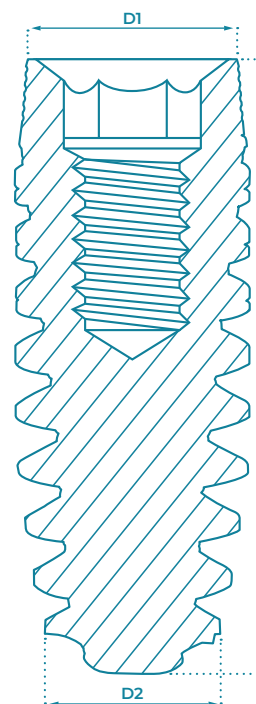
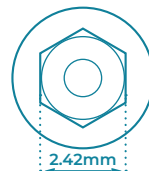
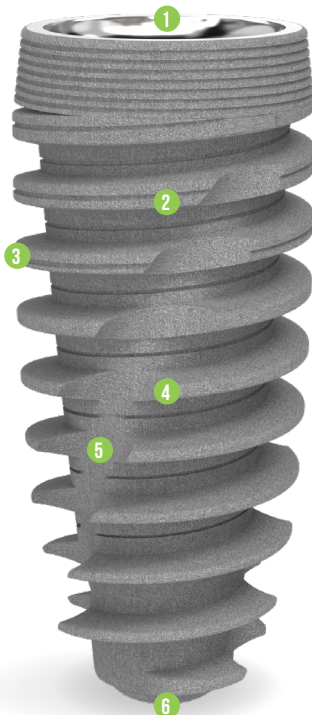
SELF TAPPING SYSTEM

- Increased thread depth and cutting edges.
- Self-drilling.
- Increases load distribution.

AGGRESSIVE APICAL APEX

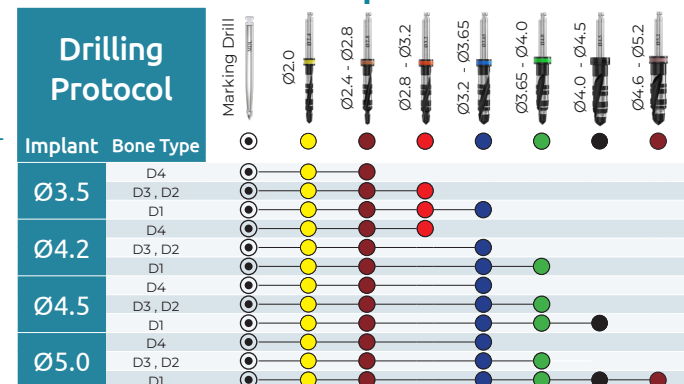
- Enhancing bone condensing.
- Features expanding threads at the bottom, offering a secure fit and sealing effects.
- ensures optimal implant stability and minimizes the risk of micromotion, promoting reliable osseointegration and long-term success.

PACKAGE CONTENT

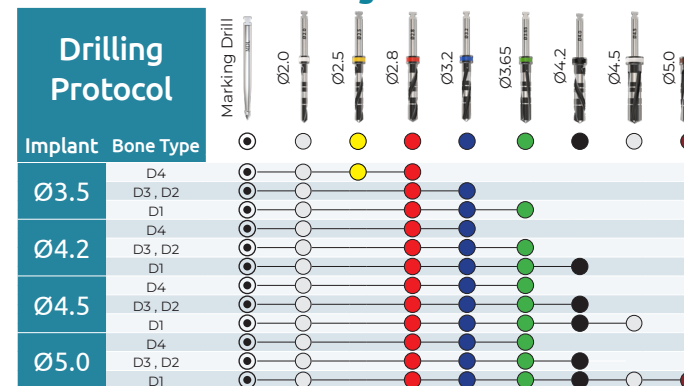


D1 (mm)	D2 (mm)	L (mm)	CODE
Ø3.5	Ø2.82	8	E3508
		10	E3510
		11.5	E3511
		13	E3513
Ø4.2	Ø3.2	16	E3516
		8	E4208
		10	E4210
		11.5	E4211
Ø4.5	Ø3.5	13	E4213
		16	E4216
		8	E4508
		10	E4510
Ø5.0	Ø4.0	11.5	E4511
		13	E4513
		16	E4516
		8	E5008
		10	E5010
		13	E5013
		16	E5016

DLC Step Drills



DLC Straight Drills



• The suggested drilling protocol is only a recommendation and should not replace the doctor's opinion.

CFI - Cylindrical Implant

CFI Implant is a highly compatible implant solution based on the popular **Internal Hexagon connection** with **SLA - Sand blast, double etched in acid surface treatment**. perfect for dense bone cases, but appropriate for all types of bone augmentation procedures. It's strong fit and proven tapered design ensures stability during procedures. Micro rings optimize shear strength, while the combined cylindrical and conical shape with V-shaped threads enhance it's stability. The flat-cutting apex allows final adjustments during placement.

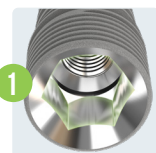
CONNECTION: Internal Hexagon 2.42mm.

MATERIAL: Ti-6Al-4V ELI (Titanium Grade 5).

SURFACE TREATMENT: SLA - Sandblast, Large Grit, Acid-etch.

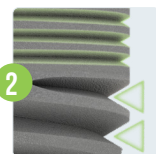
STERILIZATION: Gamma irradiation.

SPECIFICATIONS:



CONNECTION AND PLATFORM SWITCHING

- Internal Hexagon 2.42mm - One universal platform for all diameters.
- Minimizes crestal bone loss, promotes bone and soft tissue growth, improves natural aesthetics.



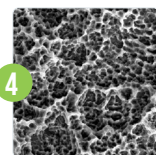
V-SHAPED THREADS AND MICRO RINGS

- Improved Stability.
- Deliver optimal surface area, better load distribution, and reduced crestal stress.



TAPERED BODY WITH CYLINDRICAL AND CONICAL SHAPE

- Excellent primary stability.
- Cylindrical shape promotes long-term osseointegration by enlarging surface area and bone to implant contact.



SLA - SANDBLAST, LARGE GRIT, ACID-ETCH

- Enhances dental implant stability and osseointegration, improving long-term success rates.



SELF TAPPING SYSTEM

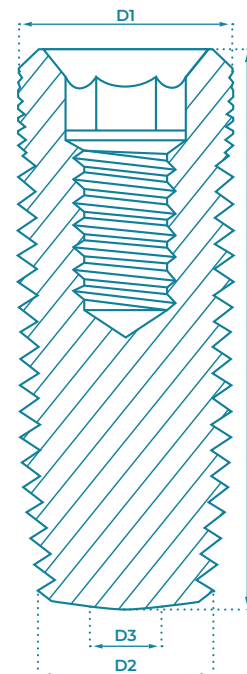
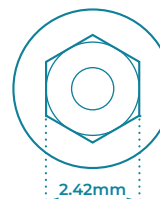
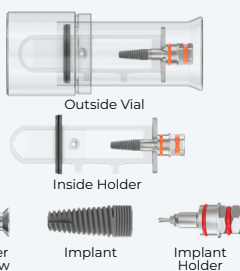
- Self-tapping.
- Self-drilling.
- Increases load distribution.



FLAT APEX

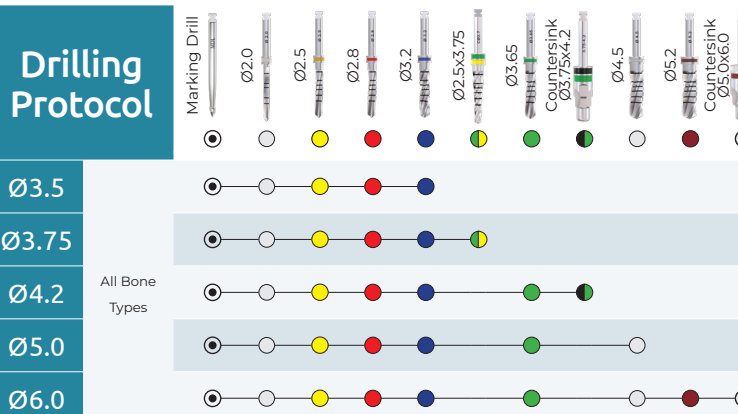
- Enhances implant stability.
- Allows final adjustments during placement.

PACKAGE CONTENT



D1 (mm)	D2 (mm)	D3 (mm)	L (mm)	CODE
Ø3.5	Ø2.8	Ø2.1	8	C3508
			10	C3510
			11.5	C3511
			13	C3513
			16	C3516
Ø3.75	Ø3.2	Ø2.5	8	C3708
			10	C3710
			11.5	C3711
			13	C3713
			16	C3716
Ø4.2	Ø3.6	Ø2.9	6	C4206
			8	C4208
			10	C4210
			11.5	C4211
			13	C4213
Ø5.0	Ø4.2	Ø3.5	6	C5006
			8	C5008
			10	C5010
			11.5	C5011
			13	C5013
Ø6.0	Ø5.2	Ø4.5	6	C6006
			8	C6008
			10	C6010
			11.5	C6011
			13	C6013

Drilling Protocol



The suggested drilling protocol is only a recommendation and should not replace the doctor's opinion.

MAX - Basal/Cortical Spiral Implant

MAX Implant is a highly compatible implant solution based on the popular

Internal Hexagon connection with RBM - Resorbable Blast Media surface treatment.

It is specifically recommended for soft bone, but highly suitable for all bone types.

MAX features sharp, deep threads and aggressive threads, which can be placed immediately without the waiting period of osseointegration or additional augmentation with bone replacement materials.

The implant is placed with the threads orthogonally to the occlusion load, ensuring remarkable stability in the cortical bone and improving chewing load distribution.

CONNECTION: Internal Hexagon 2.42mm.

MATERIAL: Ti-6Al-4V ELI (Titanium Grade 5).

SURFACE TREATMENT: RBM - Resorbable Blast Media.

STERILIZATION: Gamma irradiation.

SPECIFICATIONS:



CONNECTION AND PLATFORM SWITCHING

- Internal Hexagon 2.42mm - One universal platform for all diameters.
- Minimizes crestal bone loss, promotes bone and soft tissue growth, improves natural aesthetics.



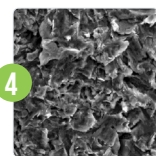
BASAL/CORTICAL BONE POSITIONING

- Smooth-surface neck.
- Ideal for patients with bone structure problems.
- Better chance of success and durability.
- Even chewing load distribution.



SHARP, DEEP, AND AGGRESSIVE THREADS

- Can be placed immediately without the waiting period of osseointegration or additional augmentation with bone replacement materials.



RBM - RESORBABLE BLAST MEDIA

- Promotes faster and stronger bone integration, enhancing the stability of dental implants.



TAPERED THREAD AND TAPERED CORE BODY

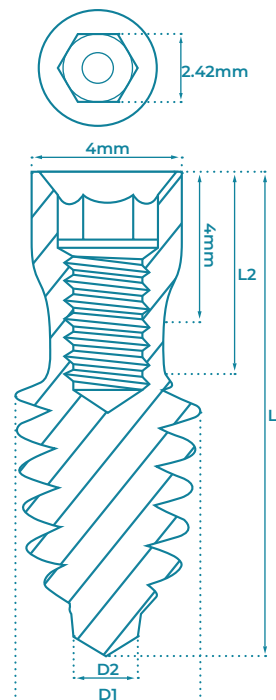
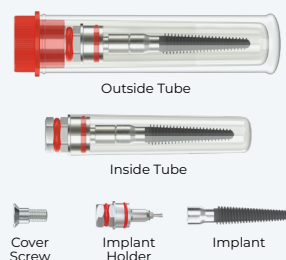
- Excellent primary stability.
- Improves bone condensation during insertion.



SELF TAPPING SYSTEM

- Self-tapping.
- Minimal drilling.

PACKAGE CONTENT



D1 (mm)	D2 (mm)	L1 (mm)	L2 (mm)	CODE
Ø4.2	1.8	10	4.5	G4210
	1.8	11.5	4.7	G4211
	1.8	13	5	G4213
	1.8	16	6	G4216
	2.5	18	7	G4218
	2.5	20	7.5	G4220
Ø5.0	2.5	22.5	7.5	G4222
	2.5	25	7.5	G4225
	1.8	8	4.1	G5008
	1.8	10	4.5	G5010
	1.8	11.5	4.7	G5011
	1.8	13	5	G5013
Ø6.0	1.8	16	6	G5016
	1.8	18	7	G5018
	1.8	20	7.5	G5020
	2	8	4.1	G6008
	2	10	4.5	G6010
	2	11.5	4.7	G6011
	2	13	5	G6013
	2	16	6	G6016

Drilling Protocol

PRM

		Marking Drill	Ø2.0	Ø2.8	Ø3.2	Ø3.65
		1200-1500	900-1200	500-700	500-700	400-700
Ø4.2	Soft Bone	●	○	○	○	○
Ø4.2	Hard Bone	●	○	●	●	○
Ø5.0	Soft Bone	●	○	○	○	○
Ø5.0	Hard Bone	●	○	●	●	○
Ø6.0	Soft Bone	●	○	○	○	○
Ø6.0	Hard Bone	●	○	●	●	●

For Over 20.0mm Implant Length

PRM

		Straight Ø2.0	Osteotome Ø2.0	Conical Ø2.0-Ø3.0	Osteotome Ø3.0	Twist Ø3.2
		900-1200		500-700		500-700
Ø4.2	Soft Bone	○	○	○	○	○
Ø4.2	Hard Bone	○	○	○	○	○

• The suggested drilling protocol is only a recommendation and should not replace the doctor's opinion.

ZYG - Zygomatic Implant

ZYG Implant is a highly compatible implant solution based on the popular **Internal Hexagon connection with RBM - Resorbable Blast Media surface treatment**. Specifically created to address issues concerning a depleted upper jawbone, making it highly suitable for graft-less treatment with immediate loading. The smooth and polished implant neck facilitates effortless insertion, and the sharp and robust threads at the apex firmly anchors the implant to the zygomatic bone. This implant is intentionally designed for an extramaxillary approach.

CONNECTION: Internal Hexagon 2.42mm.

MATERIAL: Ti-6Al-4V ELI (Titanium Grade 5).

SURFACE TREATMENT: RBM - Resorbable Blast Media.

STERILIZATION: Gamma irradiation.

SPECIFICATIONS:



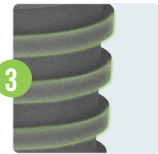
CONNECTION

- Internal Hexagon 2.42mm.
- Minimizes crestal bone loss, promotes bone and soft tissue growth, improves natural aesthetics.



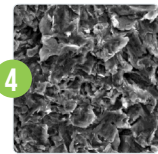
SMOOTH SURFACE NECK

- Easy insertion to the zygomatic bone.



AGGRESSIVE APICAL THREADS

- Allow for more aggressive bone engagement for indications such as immediate extraction sockets, poor bone quality, and immediate loading.



RBM - RESORBABLE BLAST MEDIA

- Promotes faster and stronger bone integration, enhancing the stability of dental implants.



TAPERED BODY WITH SPIRAL DESIGN

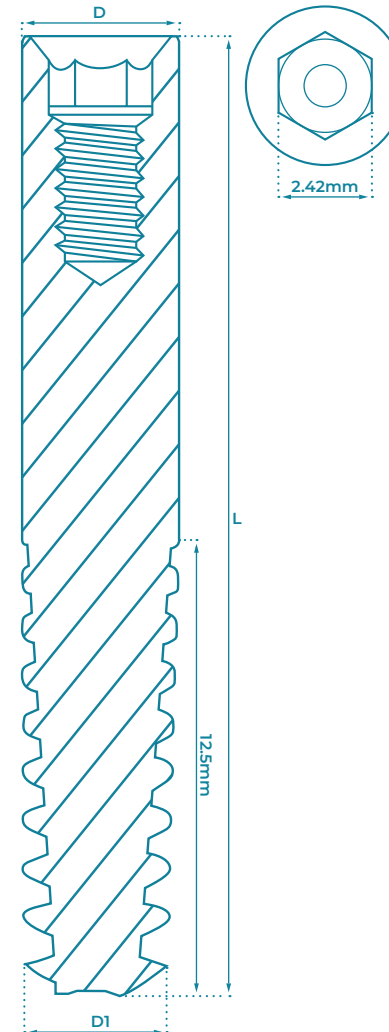
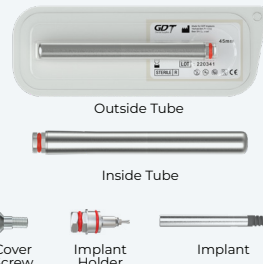
- Optimal soft tissue support .
- Excellent primary stability.
- Improves bone condensation during insertion.



SELF TAPPING SYSTEM

- Self-tapping.
- Minimal drilling.
- Increases load distribution.

PACKAGE CONTENT



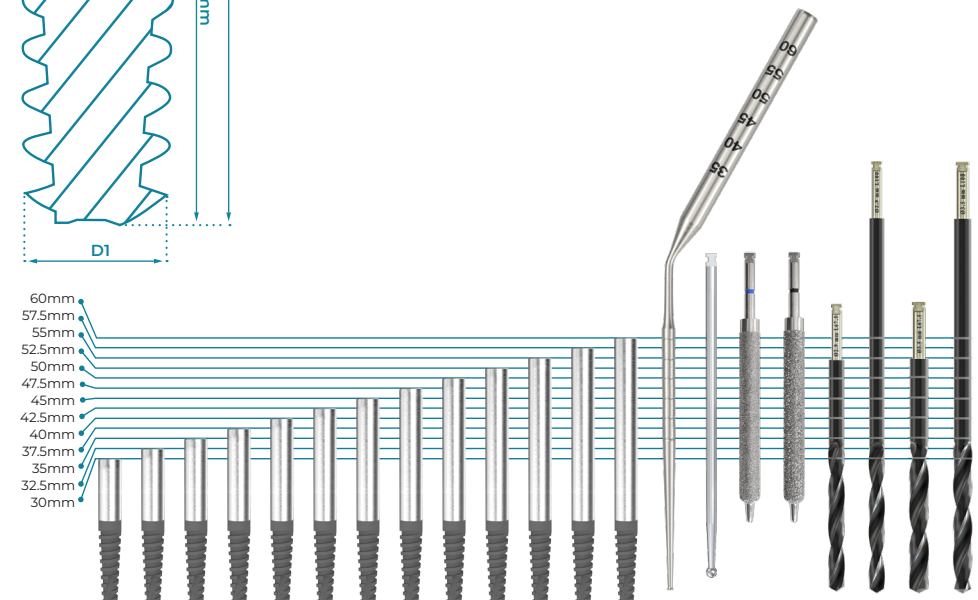
D (mm)	D1 (mm)	L (mm)	CODE
Ø4.2	3.5	30	Z4230
		32.5	Z4232
		35	Z4235
		37.5	Z4237
		40	Z4240
		42.5	Z4242
		45	Z4245
		47.5	Z4247
		50	Z4250
		52.5	Z4252
		55	Z4255
		57.5	Z4257
		60	Z4260

DRILLING PROCEDURE

- Irrigation is strongly advised throughout the drilling procedure. When drilling with irrigation, use an intermittent motion to allow debris to be flushed away.
- Continue until the required depth is reached.
- Do not exceed 1500 RPM.

CAUTION

- During drilling procedures, avoid lateral pressure on the drills - Lateral pressure to the drill can cause drill fracture.
- Before beginning drilling activities, ensure that the drill is properly fastened into the hand-piece.



• The suggested drilling protocol is only a recommendation and should not replace the doctor's opinion.