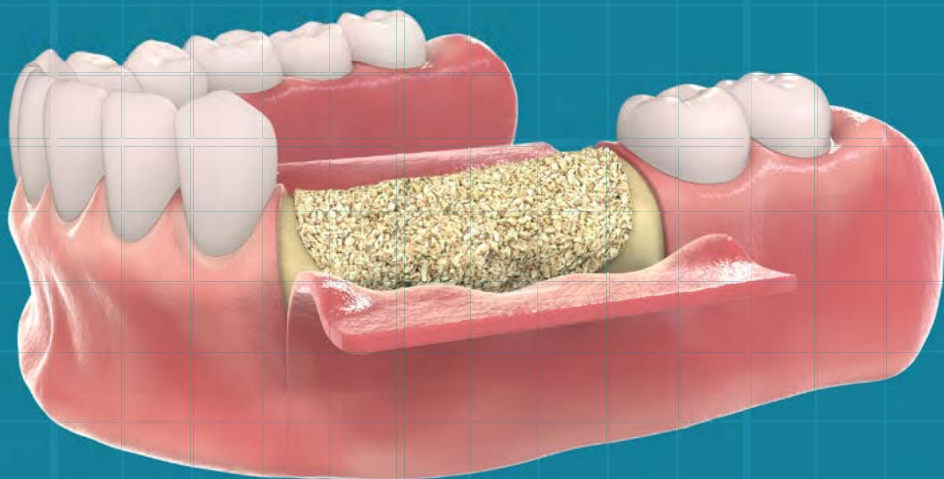


INTERACTIVE EDITION

BioMaterials Catalog 2024/2025



Orthodontic Mini Screws (TADs)

TEMPORARY ANCHORAGE DEVICES

Orthodontic Mini Screws - Temporary Anchorage Devices (TADs) are used to facilitate the movement of teeth through what is called Skeletal Anchorage. TAD Appliances are placed directly into the jawbone, then teeth are pulled towards the TADs via elastic or spring traction. When installed, the Mini Screw is in constant and direct contact with the bone and does not possess a periodontal ligament. As a result, it does not move when orthodontic force is applied, and therefore can be used as "Absolute Anchorage".

MATERIAL: Ti-6Al-4V ELI (Titanium Grade 5).

PACKAGING: Individual sterile tube, in a double blister package.

SPECIFICATIONS:



HEXAGONAL HEAD WITH A HOLE

- Hole 0.8mm (suitable for orthodontic wire up to .021 "x.025") for fixation and traction.



TRANSMUCOSAL SECTION

- Transmucosal section with perfect adaptation and tissue and peri-implant soft tissues.



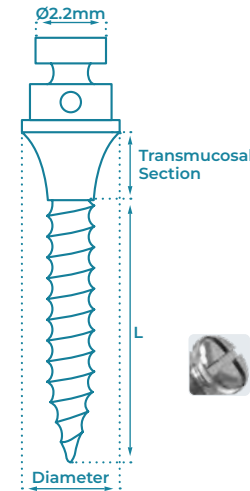
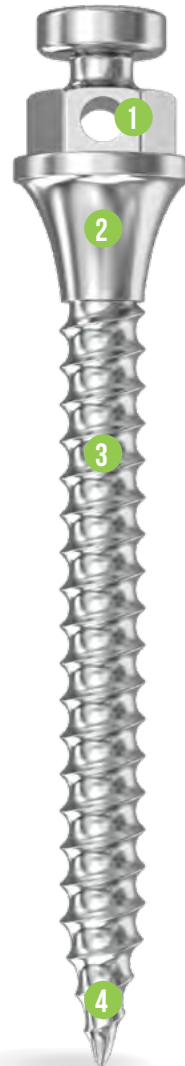
TITANIUM GRADE 5 ALLOY

- Combines properties such as low specific weight, high strength to weight ratio, very high corrosion resistance, and excellent general biocompatibility.



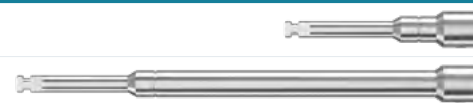
APEX

- Active point with self-piercing tip profile, specially designed to offer stability secure fit in bone texture and resistance to applications of immediate orthodontic loads.
- Self-tapping.
- Self-drilling.



TYPE	TS (mm)	DIAMETER	L (mm)	CODE
Short Neck	1	Ø1.5	6	ORT106
			8	ORT108
Standard	2	Ø1.5	6	ORT206
			8	ORT208
			10	ORT210
			12	ORT212
Wide	2	Ø2	14	ORT214
			10	ORT410
Cross-Head	1	Ø1.5	12	ORT412
			6	ORT316
Buccal Shelf	4	Ø2	8	ORT318
			10	ORT216
Zygomatic	8	Ø2	12	ORT215
			9	ORT217

HEXAGONAL KEY SHORT/LONG



L (mm)	CODE
25	ORTHKS
60	ORTHKL

SPEAR TIP POINT DRILL



L (mm)	CODE
60	ORTSTP

HAND FINGER KEY



L (mm)	CODE
25	ORTHFG

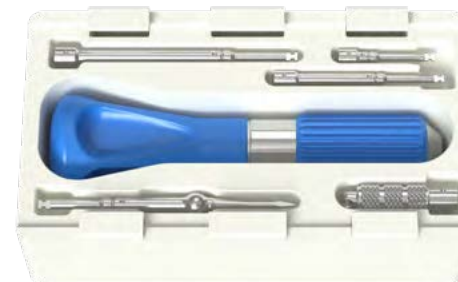
DRIVER HANDLE HOLDER TOOL



L (mm)	CODE
93	ORTHTL

ORTHODONTIC KIT

CODE - ORTKIT



The kit is made of engineering polymer with high resistance to high autoclaves temperatures.

The tools have standard coupling allowing docking in reducing surgical against angles.

The key to fitting is equipped with contain Nitinol o´ring, which facilitates the engagement and disengagement of the Mini Screw, and prevents depletion of material sterilization

ALL SOLUTION FOR A PERFECT **S**MILE



www.gdentalt.com

Global Dental Transfers Ltd.

M Tower Building
Recha Freier 9
Beer Sheva
8489440
Israel

Tel: +1 929 442 0773
Email: Info@gdentalt.com